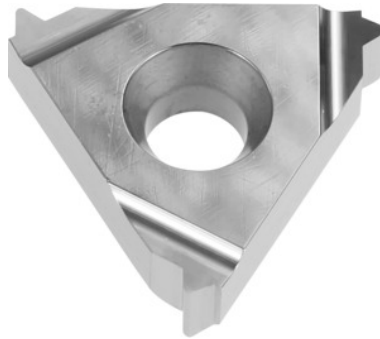




Full profile insert 55°, external, right-hand, HU7315, TPI: 28



Order data

Order number	270804 28
GTIN	4045197765192
Item class	21J

Description

Full profile insert 55°, external, right-hand 28

Technical description

Number of turns/inch	28
Tool material	Carbide
Grade	HU7315
Thread type	BSW
Thread type	BSP-LH
Thread type	BSP
Thread type	BSW-LH
Thread type	G
Thread type	G-LH
Flank angle	55 degrees
Thickness	3.6 mm

Insert size L	16 mm
Type of product	Indexable insert for thread turning