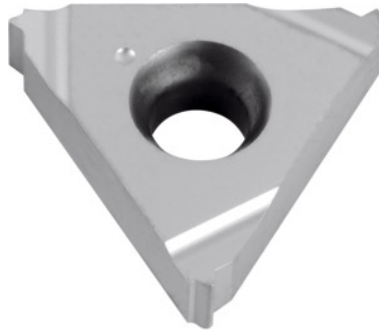




## Full profile insert 55°, internal, right-hand, HB7125, TPI: 19



### Order data

|              |               |
|--------------|---------------|
| Order number | 270827 19     |
| GTIN         | 4045197463173 |
| Item class   | 21J           |

### Description

Full profile insert 55°, internal, right-hand 19

### Technical description

|                      |            |
|----------------------|------------|
| Number of turns/inch | 19         |
| Tool material        | Carbide    |
| Grade                | HB7125     |
| Thread type          | BSW        |
| Thread type          | BSP-LH     |
| Thread type          | BSP        |
| Thread type          | BSW-LH     |
| Thread type          | G          |
| Thread type          | G-LH       |
| Flank angle          | 55 degrees |
| Thickness            | 3.6 mm     |

|                 |                                     |
|-----------------|-------------------------------------|
| Insert size L   | 16 mm                               |
| Type of product | Indexable insert for thread turning |