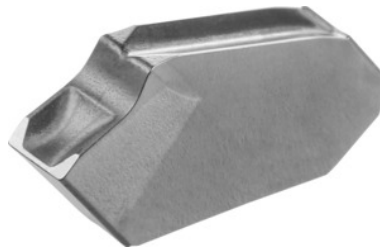


Garant
Parting-off insert neutral, CU7033, Groove width w: 2,2 mm

Order data

Order number	273300 2,2
GTIN	4045197143396
Item class	21J

Description
Application:

For parting-off tools No. 273551 – 273558.

Corner radius: 0.2 mm

Feed f in steel < 900 N/mm²: 0.07 mm/rev.

Technical description

Groove width w	2.2 mm
Feed f in steel < 900 N/mm ²	0.07 mm/rev.
Corner radius	0.2 mm
Finishing/roughing assignment	Skrubbearbejdning-sletbearbejdning
Tool material	Cermet
Main application	P
Cutting conditions	continuous
Grade	CU7033
Number of changes/inserts	1
Indexable insert profile	neutral

Type of product

Indexable insert for grooving