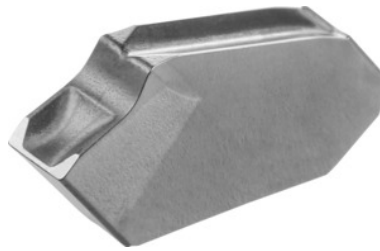


Garant
Parting-off insert neutral, CU7033, Groove width w: 3,1 mm

Order data

Order number	273300 3,1
GTIN	4045197143402
Item class	21J

Description
Application:

For parting-off tools No. 273551 – 273558.

Corner radius: 0.2 mm

Feed f in steel $< 900 \text{ N/mm}^2$: 0.1 mm/rev.

Technical description

Groove width w	3.1 mm
Feed f in steel $< 900 \text{ N/mm}^2$	0.1 mm/rev.
Corner radius	0.2 mm
Finishing/roughing assignment	Skrubbearbejdning-sletbearbejdning
Tool material	Cermet
Main application	P
Cutting conditions	continuous
Grade	CU7033
Number of changes/inserts	1
Indexable insert profile	neutral

Type of product

Indexable insert for grooving