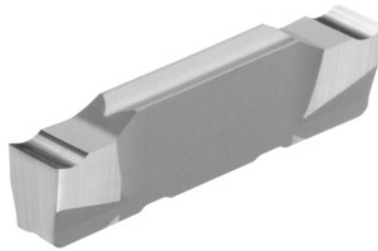


Garant
Parting-off insert right-hand 10°, HU7310, Groove width w: 2,5 mm

Order data

Order number	273678 2,5
GTIN	4045197716668
Item class	21L

Description

Parting-off insert right-hand 10° 2,5 mm Tolerance groove width w: ± 0.03 mm
Feed f: 0.06 - 0.17 mm/rev.

Technical description

Groove width w	2.5 mm
Tolerance groove width w	± 0.03 mm
Feed f	0.06 - 0.17 mm/rev.
Finishing/roughing assignment	Skrubbearbejdning-sletbearbejdning
Tool material	Carbide
Main application	N
Secondary application	Ti
Cutting conditions	continuous
Grade	HU7310
Corner radius R	0.05 mm
Number of changes/inserts	2
Indexable insert profile	right-hand

Type of product

Indexable insert for grooving