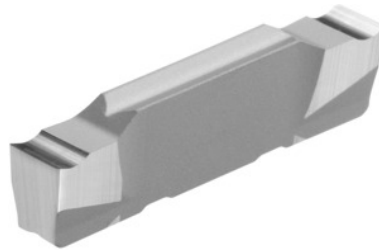


**Garant**
**Parting-off insert right-hand 10°, HU7310, Groove width w: 2 mm**

**Order data**

Order number	273678 2
GTIN	4045197716651
Item class	21L

**Description**

Parting-off insert right-hand 10° 2 mm Tolerance groove width w:  $\pm 0.03$  mm  
Feed f: 0.05 - 0.15 mm/rev.

**Technical description**

Tolerance groove width w	$\pm 0.03$ mm
Groove width w	2 mm
Feed f	0.05 - 0.15 mm/rev.
Finishing/roughing assignment	Skrubbearbejdning-sletbearbejdning
Tool material	Carbide
Main application	N
Secondary application	Ti
Cutting conditions	continuous
Grade	HU7310
Corner radius R	0.05 mm
Number of changes/inserts	2
Indexable insert profile	right-hand

Type of product

Indexable insert for grooving