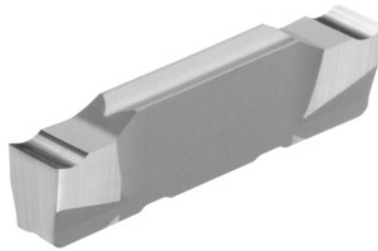


Garant
Parting-off insert left-hand 10°, HU7310, Groove width w: 2,5 mm

Order data

| | |
|--------------|---------------|
| Order number | 273680 2,5 |
| GTIN | 4045197719119 |
| Item class | 21L |

Description

Parting-off insert left-hand 10° 2,5 mm Tolerance groove width w: ± 0.03 mm
Feed f: 0.06 - 0.17 mm/rev.

Technical description

| | |
|-------------------------------|------------------------------------|
| Tolerance groove width w | ± 0.03 mm |
| Groove width w | 2.5 mm |
| Feed f | 0.06 - 0.17 mm/rev. |
| Finishing/roughing assignment | Skrubbearbejdning-sletbearbejdning |
| Tool material | Carbide |
| Main application | N |
| Secondary application | Ti |
| Cutting conditions | continuous |
| Grade | HU7310 |
| Corner radius R | 0.05 mm |
| Number of changes/inserts | 2 |
| Indexable insert profile | left-hand |

Type of product

Indexable insert for grooving