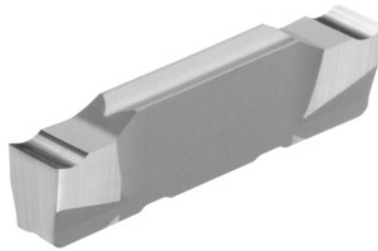


Garant
Parting-off insert left-hand 10°, HU7310, Groove width w: 4 mm

Order data

Order number	273680 4
GTIN	4045197719133
Item class	21L

Description

Parting-off insert left-hand 10° 4 mm Tolerance groove width w: ± 0.04 mm
Feed f: 0.08 - 0.26 mm/rev.

Technical description

Groove width w	4 mm
Tolerance groove width w	± 0.04 mm
Feed f	0.08 - 0.26 mm/rev.
Finishing/roughing assignment	Skrubbearbejdning-sletbearbejdning
Tool material	Carbide
Main application	N
Secondary application	Ti
Cutting conditions	continuous
Grade	HU7310
Corner radius R	0.05 mm
Number of changes/inserts	2
Indexable insert profile	left-hand

Type of product

Indexable insert for grooving