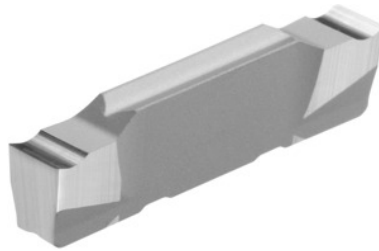


**Garant**
**Parting-off / grooving insert, HU7310, Groove width w: 6 mm**

**Order data**

Order number	273697 6
GTIN	4045197580450
Item class	21L

**Description**

Parting-off / grooving insert 6 mm Tolerance groove width w:  $\pm 0.04$  mm  
Feed f: 0.09 - 0.34 mm/rev.

**Technical description**

Groove width w	6 mm
Tolerance groove width w	$\pm 0.04$ mm
Feed f	0.09 - 0.34 mm/rev.
Finishing/roughing assignment	Skrubbearbejdning-sletbearbejdning
Tool material	Carbide
Main application	N
Secondary application	Ti
Cutting conditions	continuous
Grade	HU7310
Corner radius R	0.2 mm
Number of changes/inserts	2
Indexable insert profile	neutral

Type of product

Indexable insert for grooving