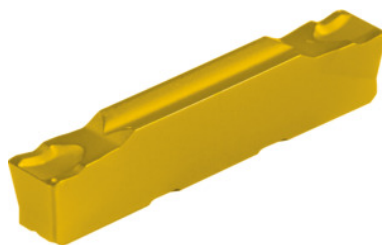


Garant
Parting-off / grooving insert, HB7215, Groove width w: 2,5 mm

Order data

Order number	273702 2,5
GTIN	4045197578945
Item class	21J

Description

Parting-off / grooving insert 2,5 mm Tolerance groove width w: ± 0.03 mm
Feed f: 0.06 - 0.17 mm/rev.

Technical description

Groove width w	2.5 mm
Tolerance groove width w	± 0.03 mm
Feed f	0.06 - 0.17 mm/rev.
Finishing/roughing assignment	Skrubbearbejdning-sletbearbejdning
Tool material	Carbide
Main application	K
Secondary application	P
Cutting conditions	continuous
Grade	HB7215
Corner radius R	0.2 mm
Number of changes/inserts	2
Indexable insert profile	neutral

Type of product

Indexable insert for grooving