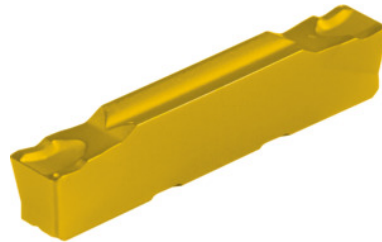


**Garant**
**Parting-off / grooving insert, HB7215, Groove width w: 3 mm**

**Order data**

Order number	273706 3
GTIN	4045197502766
Item class	21J

**Description**

Parting-off / grooving insert 3 mm Tolerance groove width w:  $\pm 0.03$  mm  
Feed f: 0.07 - 0.2 mm/rev.

**Technical description**

Tolerance groove width w	$\pm 0.03$ mm
Groove width w	3 mm
Feed f	0.07 - 0.2 mm/rev.
Finishing/roughing assignment	Skrubbearbejdning-sletbearbejdning
Tool material	Carbide
Main application	K
Secondary application	P
Cutting conditions	continuous
Grade	HB7215
Corner radius R	0.3 mm
Number of changes/inserts	2
Indexable insert profile	neutral

Type of product

Indexable insert for grooving