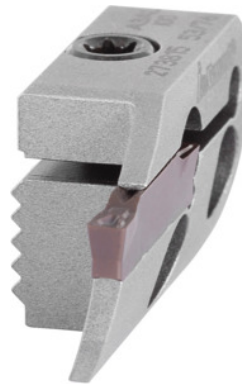


Garant

**Blade carrier, convex for face grooving, right-hand, Ø range Groove D1 / D2:
33/43 mm**

**Order data**

Order number	273812 33/43
GTIN	4045197576842
Item class	21W

Description**Version:**

Extremely rigid connection and precise clamping due to serrated contact face between the toolholder and clamp.

Application:

In conjunction with toolholders No. 273800 to 273811.

Supplied with:

Without clamping screws (these are supplied with the toolholders).

Spare part:

Clamp screw No. 279815 9.

Attention:

Without clamping screws (these are supplied with the toolholders).

Note:

D_1 = minimum Ø for the first groove / D_2 = maximum Ø for the first cut.

Technology values should be reduced by 30 – 50% depending on the clamping situation and material.

Groove width w : 2 mm

maximum cutting depth t_{max} : 13 mm

Technical description

minimum 1st groove $\varnothing D_1$	33 mm
maximum 1st groove $\varnothing D_2$	43 mm
maximum cutting depth t_{\max}	13 mm
Application type	right-hand
Groove width w	2 mm
Type of product	Cutting head

Accessories

Clamping screw	279910
Clamping screw Type 9	279815 9