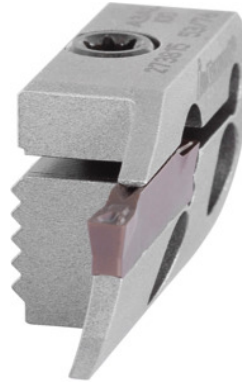


**Garant**

**Blade carrier, convex for face grooving, right-hand, Ø range Groove D1 / D2:  
150/250 mm**


**Order data**

Order number	273817 150/250
GTIN	4045197538109
Item class	21W

**Description**
**Version:**

Extremely rigid connection and precise clamping due to serrated contact face between the toolholder and clamp.

**Application:**

In conjunction with toolholders No. 273800 to 273811.

**Supplied with:**

Without clamping screws (these are supplied with the toolholders).

**Spare part:**

Clamp screw No. 279815 9.

**Attention:**

Without clamping screws (these are supplied with the toolholders).

**Note:**

$D_1$  = minimum Ø for the first groove /  $D_2$  = maximum Ø for the first cut.

Technology values should be reduced by 30 – 50% depending on the clamping situation and material.

Groove width  $w$ : 4 mm

maximum cutting depth  $t_{max}$ : 15 mm

## Technical description

maximum cutting depth $t_{\max}$	15 mm
minimum 1st groove $\varnothing D_1$	150 mm
maximum 1st groove $\varnothing D_2$	250 mm
Application type	right-hand
Groove width w	4 mm
Type of product	Cutting head

---

## Accessories

Clamping screw	279910
Clamping screw Type 9	279815 9