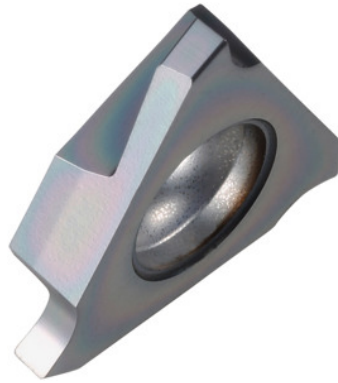


Garant
Grooving insert right-hand, Width groove m (H13): 1,1 mm

Order data

| | |
|--------------|---------------|
| Order number | 273902 1,1 |
| GTIN | 4045197768230 |
| Item class | 21J |

Description

Grooving insert right-hand 1,1 mm Blade width w: 1.1 mm
 t_{\max} : 2 mm
 Corner radius R: 0.05 mm
 for circlips to DIN 471 / 472 ring thickness: 1 mm

Technical description

| | |
|--|------------------------------------|
| Blade width w | 1.1 mm |
| Width groove m (H13) | 1.1 mm |
| t_{\max} | 2 mm |
| for circlips to DIN 471 / 472 ring thickness | 1 mm |
| Finishing/roughing assignment | Skrubbearbejdning-sletbearbejdning |
| Tool material | Carbide |
| Corner radius R | 0.05 mm |
| Insert assignment | right-hand |

| | |
|---|-------------------------------|
| Grade | HB9635 |
| Slots to standard | DIN 471 |
| Slots to standard | DIN 472 |
| Number of changes/inserts | 3 |
| Main application | P |
| Secondary application | M |
| Cutting conditions | continuous |
| Cutting speed v_c main application | 110 - 170 mm/min |
| Cutting speed v_c secondary application | 90 - 140 mm/min |
| Type of product | Indexable insert for grooving |