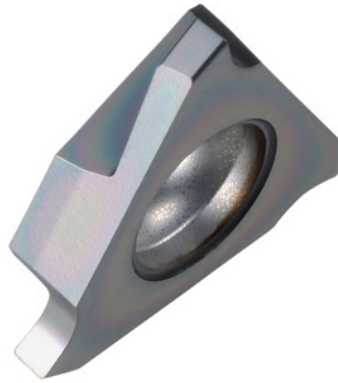


Garant
Grooving insert right-hand, Width groove m (H13): 1,5 mm

Order data

Order number	273902 1,5
GTIN	4045197768254
Item class	21J

Description

Grooving insert right-hand 1,5 mm Blade width w: 1.5 mm

t_{\max} : 2.5 mm

Corner radius R: 0.2 mm

Technical description

Width groove m (H13)	1.5 mm
t_{\max}	2.5 mm
Blade width w	1.5 mm
Finishing/roughing assignment	Skrubbearbejdning-sletbearbejdning
Tool material	Carbide
Corner radius R	0.2 mm
Insert assignment	right-hand
Grade	HB9635
Slots to standard	DIN 471

Slots to standard	DIN 472
Number of changes/inserts	3
Main application	P
Secondary application	M
Cutting conditions	continuous
Cutting speed v_c main application	110 - 170 mm/min
Cutting speed v_c secondary application	90 - 140 mm/min
Type of product	Indexable insert for grooving