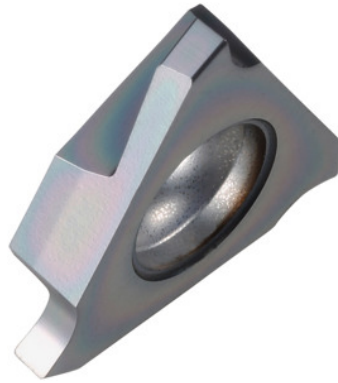


**Garant**
**Grooving insert right-hand, Width groove m (H13): 1,6 mm**

**Order data**

|              |               |
|--------------|---------------|
| Order number | 273902 1,6    |
| GTIN         | 4045197768261 |
| Item class   | 21J           |

**Description**

Grooving insert right-hand 1,6 mm Blade width w: 1.6 mm  
 $t_{\max}$ : 2.5 mm  
 Corner radius R: 0.2 mm  
 for circlips to DIN 471 / 472 ring thickness: 1.5 mm

**Technical description**

|  |                                    |
|--|------------------------------------|
| Width groove m (H13)                         | 1.6 mm                             |
| $t_{\max}$                                   | 2.5 mm                             |
| Blade width w                                | 1.6 mm                             |
| for circlips to DIN 471 / 472 ring thickness | 1.5 mm                             |
| Finishing/roughing assignment                | Skrubbearbejdning-sletbearbejdning |
| Tool material                                | Carbide                            |
| Corner radius R                              | 0.2 mm                             |
| Insert assignment                            | right-hand                         |

|   |                               |
|---|-------------------------------|
| Grade                                     | HB9635                        |
| Slots to standard                         | DIN 471                       |
| Slots to standard                         | DIN 472                       |
| Number of changes/inserts                 | 3                             |
| Main application                          | P                             |
| Secondary application                     | M                             |
| Cutting conditions                        | continuous                    |
| Cutting speed $v_c$ main application      | 110 - 170 mm/min              |
| Cutting speed $v_c$ secondary application | 90 - 140 mm/min               |
| Type of product                           | Indexable insert for grooving |