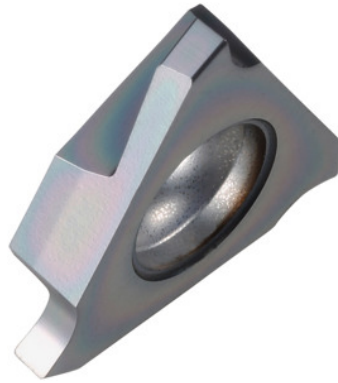


Garant
Grooving insert right-hand, Width groove m (H13): 1,85 mm

Order data

Order number	273902 1,85
GTIN	4045197768278
Item class	21J

Description

Grooving insert right-hand 1,85 mm
 Blade width w: 1.85 mm
 t_{\max} : 2.5 mm
 Corner radius R: 0.2 mm
 for circlips to DIN 471 / 472 ring thickness: 1.75 mm

Technical description

t_{\max}	2.5 mm
for circlips to DIN 471 / 472 ring thickness	1.75 mm
Blade width w	1.85 mm
Width groove m (H13)	1.85 mm
Finishing/roughing assignment	Skrubbearbejdning-sletbearbejdning
Tool material	Carbide
Corner radius R	0.2 mm
Insert assignment	right-hand

Grade	HB9635
Slots to standard	DIN 471
Slots to standard	DIN 472
Number of changes/inserts	3
Main application	P
Secondary application	M
Cutting conditions	continuous
Cutting speed v_c main application	110 - 170 mm/min
Cutting speed v_c secondary application	90 - 140 mm/min
Type of product	Indexable insert for grooving