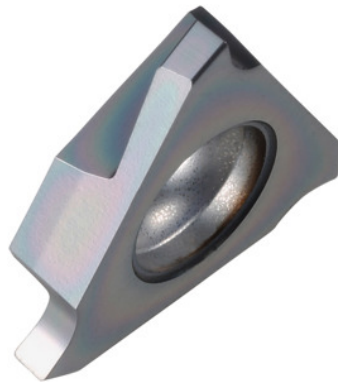


**Garant**
**Grooving insert right-hand, Width groove m (H13): 2,65 mm**

**Order data**

Order number	273902 2,65
GTIN	4045197768315
Item class	21J

**Description**

Grooving insert right-hand 2,65 mm  
 Blade width w: 2.65 mm  
 $t_{max}$ : 2.5 mm  
 Corner radius R: 0.2 mm  
 for circlips to DIN 471 / 472 ring thickness: 2.5 mm

**Technical description**

$t_{max}$	2.5 mm
Width groove m (H13)	2.65 mm
Blade width w	2.65 mm
for circlips to DIN 471 / 472 ring thickness	2.5 mm
Finishing/roughing assignment	Skrubbearbejdning-sletbearbejdning
Tool material	Carbide
Corner radius R	0.2 mm
Insert assignment	right-hand

Grade	HB9635
Slots to standard	DIN 471
Slots to standard	DIN 472
Number of changes/inserts	3
Main application	P
Secondary application	M
Cutting conditions	continuous
Cutting speed $v_c$ main application	110 - 170 mm/min
Cutting speed $v_c$ secondary application	90 - 140 mm/min
Type of product	Indexable insert for grooving