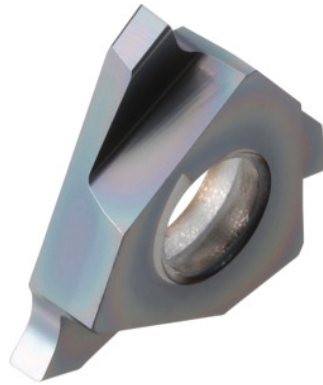


**Garant**
**Grooving insert left-hand, Width groove m (H13): 1,3 mm**

**Order data**

Order number	273908 1,3
GTIN	4045197768506
Item class	21J

**Description**

Grooving insert left-hand 1,3 mm  
 Blade width w: 1.3 mm  
 $t_{\max}$ : 2 mm  
 Corner radius R: 0.2 mm  
 for circlips to DIN 471 / 472 ring thickness: 1.2 mm

**Technical description**

$t_{\max}$	2 mm
for circlips to DIN 471 / 472 ring thickness	1.2 mm
Blade width w	1.3 mm
Width groove m (H13)	1.3 mm
Finishing/roughing assignment	Skrubbearbejdning-sletbearbejdning
Tool material	Carbide
Corner radius R	0.2 mm
Insert assignment	left-hand

Grade	HB9635
Slots to standard	DIN 472
Slots to standard	DIN 471
Number of changes/inserts	3
Main application	P
Secondary application	M
Cutting conditions	continuous
Cutting speed $v_c$ main application	110 - 170 mm/min
Cutting speed $v_c$ secondary application	90 - 140 mm/min
Type of product	Indexable insert for grooving