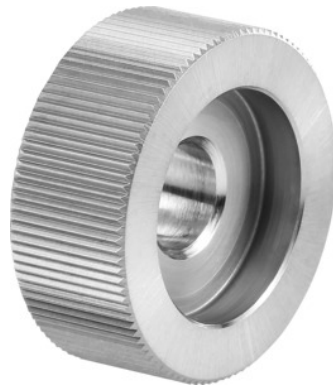



**Knurl PM, AA, Knurl  $\varnothing$  d<sub>1</sub> × knurl width w / pitch: 15X6/1,2 mm**

**Order data**

Order number	290150 15X6/1,2
GTIN	4030741265372
Item class	29I

**Description**
**Version:**

With 45° chamfer.

Wear-resistant powder metal.

**Note:**

**Further sizes and profiles available on request.**

Knurl bore  $\varnothing$  d<sub>2</sub>: 6 mm

Knurled countersunk  $\varnothing$  d<sub>3</sub>: 11 mm

**Technical description**

Tooth pitch	1.2
Knurl $\varnothing$ d <sub>1</sub>	15 mm
Knurl width w	6 mm
Knurl bore $\varnothing$ d <sub>2</sub>	6 mm
Knurled countersunk $\varnothing$ d <sub>3</sub>	11 mm
Knurl type	AA

Type of product

Self-centering knurling tool