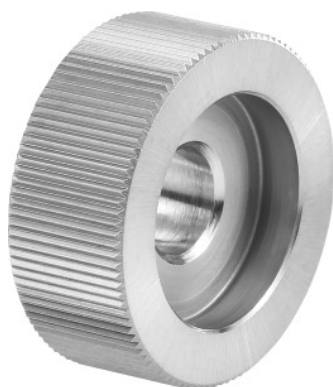




Knurl PM, AA, Knurl \varnothing d1 \times knurl width w / pitch: 20X8/1,5 mm



Order data

| | |
|--------------|-----------------|
| Order number | 290150 20X8/1,5 |
| GTIN | 4030741265273 |
| Item class | 29I |

Description

Version:

With 45° chamfer.

Wear-resistant powder metal.

Note:

Further sizes and profiles available on request.

Knurl bore \varnothing d₂: 6 mm

Knurled countersunk \varnothing d₃: 13 mm

Technical description

| | |
|--|-------|
| Tooth pitch | 1.5 |
| Knurl \varnothing d ₁ | 20 mm |
| Knurl bore \varnothing d ₂ | 6 mm |
| Knurl width w | 8 mm |
| Knurled countersunk \varnothing d ₃ | 13 mm |
| Knurl type | AA |

Type of product

Self-centering knurling tool