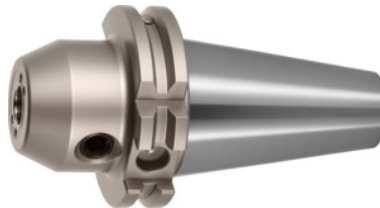


Garant

Side lock arbor Form ADB with cooling channel bores, nickel-plated, SK 40 short, Clamping \varnothing D1: 16 mm



Order data

Order number	300120 16
GTIN	4045197945716
Item class	31A

Description

Version:

GARANT –

All shanks hard turned (for smooth cutting action!). Balancing quality G 2.5 / G 25,000 rpm

With coolant supply holes that can be plugged.

Special nickel plating.

With Balluffchip bore.

Application:

For clamping tools with side flats to DIN 1835 B and DIN 6535 HB.

Optional extras:

Pull studs (PS) No. 308600 – 308806. Pull stud wrenches No. 308820; 308835.

Overhang dimension A: 63 mm

External \varnothing D: 48 mm

Spare clamping screw No. 30 9900: 16

Technical description

Clamping \varnothing D ₁	16 mm
Overhang dimension A	63 mm
External \varnothing D	48 mm
Spare clamping screw No. 30 9900	16

Adapter	SK 40 short
Standard	DIN 6359
Arbor standard	ISO 7388-1
Shape	ADB
Cooling channel bore	lockable
Balance quality G at rotational speed	G 2.5 at 25,000 rpm
Concentricity	$\leq 3 \mu\text{m}$
Machining strategy	HPC
Type of product	Side lock arbor

Accessories

Spare clamping screw for chucks with clamping \varnothing D1 16 mm

309900 16