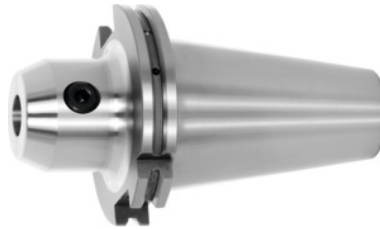


Garant
Side lock arbor Form ADB, SK 50 short, Clamping range \varnothing D1: 14 mm

Order data

Order number	300295 14
GTIN	4045197283917
Item class	31A

Description
Version:

With Balluffchip bore.

GARANT –

All shanks hard turned (for smooth cutting action!). Balancing quality G 2.5 / G 25,000 rpm

Application:

For clamping tools with side flat to DIN 1835 B and DIN 6535 HB.

Optional extras:

Pull studs (PS) No. 308600 – 308806. Pull stud wrenches No. 308820; 308835.

Machining strategy: HPC

Overhang dimension A: 63 mm

External \varnothing D: 44 mm

Spare clamping screw No. 30 9900: 12

Technical description

Overhang dimension A	63 mm
Spare clamping screw No. 30 9900	12
Clamping \varnothing D ₁	14 mm
External \varnothing D	44 mm
Adapter	SK 50 short

Standard	DIN 6359
Arbor standard	ISO 7388-1
Shape	ADB
Balance quality G at rotational speed	G 2.5 at 25,000 rpm
Concentricity	≤ 3 μm
Machining strategy	HPC
Type of product	Side lock arbor

Accessories

Pull stud 60° sealed suitable for steep tapers 50	308785 50
Pull stud Form B suitable for steep tapers 50	308640 50
Special pull stud with no internal thread sealed suitable for steep tapers 50	308720 50
Special pull stud with no internal thread sealed suitable for steep tapers 50	308700 50
Torque insert for Pull studs to SO 7388 suitable for ISO taper size 50	308812 50
Pull stud sealed, form B suitable for steep tapers 50	308620 50
Pull stud, 18CrNiMo7 Form A suitable for steep tapers 50	308605 50
Pull stud 45° sealed suitable for steep tapers 50	308760 50
Pull stud sealed suitable for steep tapers 50	308660 50
Pull stud, 18CrNiMo7 sealed, form B suitable for steep tapers 50	308615 50
Pull stud Form A suitable for steep tapers 50	308600 50
Pull stud 90° sealed suitable for steep tapers 50	308790 50
Wrench for pull studs DIN ISO 7388-1 (formerly DIN 69872) suitable for ISO taper size 50	308820 50
Special pull stud with internal thread suitable for steep tapers 50	308740 50
	308810 50

Torque insert for Pull studs to DIN 69872 suitable for ISO taper size 50

Pull stud 45° sealed suitable for steep tapers 50	308765 50
Pull stud stud sealed, form A suitable for steep tapers 50	308610 50
Pull stud sealed, form B suitable for steep tapers 50	308650 50
Pull stud 90° sealed suitable for steep tapers 50	308795 50
Wrench for pull studs ISO 7388 suitable for ISO taper size 50	308830 50
Spare clamping screw for chucks with clamping Ø D1 12 mm	309900 12