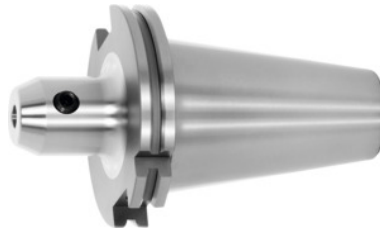


Garant
Side lock arbor Form ADB, SK 50 short, Clamping range \varnothing D1: 8 mm

Order data

| | |
|--------------|---------------|
| Order number | 300295 8 |
| GTIN | 4045197283580 |
| Item class | 31A |

Description
Version:

With Balluffchip bore.

GARANT –

All shanks hard turned (for smooth cutting action!). Balancing quality G 2.5 / G 25,000 rpm

Application:

For clamping tools with side flat to DIN 1835 B and DIN 6535 HB.

Optional extras:

Pull studs (PS) No. 308600 – 308806. Pull stud wrenches No. 308820; 308835.

Machining strategy: HPC

Overhang dimension A: 63 mm

External \varnothing D: 28 mm

Spare clamping screw No. 30 9900: 8

Technical description

| | |
|---------------------------------------|-------------|
| Clamping \varnothing D ₁ | 8 mm |
| Spare clamping screw No. 30 9900 | 8 |
| Overhang dimension A | 63 mm |
| External \varnothing D | 28 mm |
| Adapter | SK 50 short |

| | |
|---------------------------------------|---------------------|
| Standard | DIN 6359 |
| Arbor standard | ISO 7388-1 |
| Shape | ADB |
| Balance quality G at rotational speed | G 2.5 at 25,000 rpm |
| Concentricity | ≤ 3 μm |
| Machining strategy | HPC |
| Type of product | Side lock arbor |

Accessories

| | |
|--|-----------|
| Pull stud 45° sealed suitable for steep tapers 50 | 308760 50 |
| Pull stud Form B suitable for steep tapers 50 | 308640 50 |
| Pull stud 90° sealed suitable for steep tapers 50 | 308795 50 |
| Pull stud stud sealed, form A suitable for steep tapers 50 | 308610 50 |
| Pull stud Form A suitable for steep tapers 50 | 308600 50 |
| Pull stud, 18CrNiMo7 sealed, form B suitable for steep tapers 50 | 308615 50 |
| Pull stud 90° sealed suitable for steep tapers 50 | 308790 50 |
| Pull stud sealed suitable for steep tapers 50 | 308660 50 |
| Wrench for pull studs ISO 7388 suitable for ISO taper size 50 | 308830 50 |
| Pull stud 60° sealed suitable for steep tapers 50 | 308785 50 |
| Pull stud sealed, form B suitable for steep tapers 50 | 308650 50 |
| Pull stud sealed, form B suitable for steep tapers 50 | 308620 50 |
| Torque insert for Pull studs to SO 7388 suitable for ISO taper size 50 | 308812 50 |
| Wrench for pull studs DIN ISO 7388-1 (formerly DIN 69872) suitable for ISO taper size 50 | 308820 50 |
| Special pull stud with no internal thread sealed suitable for steep tapers 50 | 308720 50 |

| | |
|---|-----------|
| Torque insert for Pull studs to DIN 69872 suitable for ISO taper size 50 | 308810 50 |
| Pull stud 45° sealed suitable for steep tapers 50 | 308765 50 |
| Special pull stud with no internal thread sealed suitable for steep tapers 50 | 308700 50 |
| Special pull stud with internal thread suitable for steep tapers 50 | 308740 50 |
| Pull stud, 18CrNiMo7 Form A suitable for steep tapers 50 | 308605 50 |
| Spare clamping screw for chucks with clamping Ø D1 8 mm | 309900 8 |