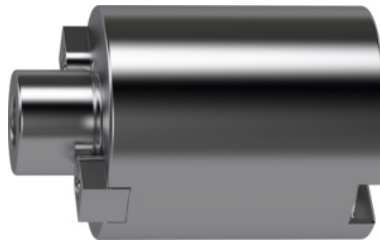




Face mill arbor extension long, Spigot \varnothing d1: 40 mm



Order data

Order number	301106 40
GTIN	4045197779311
Item class	32B

Description

Version:

Mounting spigot, bore and all contact surfaces are ground at the collar.

Application:

For flexible extensions of face mill arbors. Economy alternative to expensive custom-made arbors. 3 options for use: short (45 mm) or long (70 mm) extension or maximum extension by combining two short extensions (2×45 mm).

Supplied with:

Suitable lock screw.

Optional extras:

Toggle spanner No. 309840,

Spare screws No. 301107; 301108; 301111,

Spare screw No. 301109 for mounting 2 short extensions (2×45 mm).

Concentricity: $\leq 3 \mu\text{m}$

External \varnothing D: 89 mm

Overall length L: 70 mm

A: 27 mm

Technical description

Spigot \varnothing d ₁	40 mm
Overall length L	70 mm

External Ø D	89 mm
A	27 mm
Standard	DIN 6357
Concentricity	≤ 3 µm
Type of product	Face mill arbor accessories

Accessories

Toggle spanner for mandrel Ø 22 mm	309840 22
Toggle spanner for mandrel Ø 32 mm	309840 32
Toggle spanner for mandrel Ø 60 mm	309840 60
Toggle spanner for mandrel Ø 40 mm	309840 40
Toggle spanner for mandrel Ø 50 mm	309840 50
Clamping screw for extension 70 mm for spigot Ø D1 27 mm	301108 27
Locking screw for extension for mandrel length L 70 mm	301111 70
Toggle spanner for mandrel Ø 13 mm	309840 13
Clamping screw for extension 70 mm for spigot Ø D1 40 mm	301108 40
Clamping screw for extension 70 mm for spigot Ø D1 32 mm	301108 32
Clamping screw for extension 70 mm for spigot Ø D1 22 mm	301108 22
Toggle spanner for mandrel Ø 27 mm	309840 27
Clamping screw for extension 70 mm for spigot Ø D1 16 mm	301108 16
Toggle spanner for mandrel Ø 16 mm	309840 16