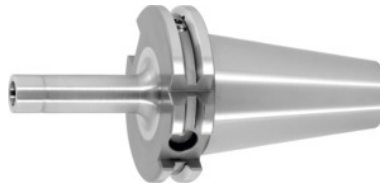


Garant
**Arbor for screw-in milling cutters with thread, SK 40, Thread M × Length L1:
M12X50**

Order data

Order number	301309 M12X50
GTIN	4045197706775
Item class	31A

Description
Version:

Plain design.

Application:

To take screw-in milling cutters with thread.

Optional extras:

Pull studs (PS) No. 308600 – 308806, PS wrenches No. 308820 – 308835.

Machining strategy: HSC

Overhang dimension A: 69 mm

Bore $\varnothing D_1$ tolerance IT6: 12.5 mm

$\varnothing D_2$: 21 mm

External $\varnothing D$: 24 mm

Reach L_1 : 50 mm

L_2 : 5 mm

Technical description

Bore $\varnothing D_1$ tolerance IT6	12.5 mm
Thread M	M12×50
Reach L_1	50 mm
$\varnothing D_2$	21 mm
L_2	5 mm

Overhang dimension A	69 mm
External Ø D	24 mm
Adapter	SK 40
Arbor standard	ISO 7388-1
Shape	ADB
Balance quality G at rotational speed	G 2.5 at 25,000 rpm
Concentricity	≤ 3 µm
Machining strategy	HSC
Type of product	Threaded copy mill arbor

Accessories

Pull stud 45° sealed suitable for steep tapers 40	308765 40
Pull stud sealed suitable for steep tapers 40	308635 40
Pull stud Hurco 45° with bore and fit sealed suitable for steep tapers 40	308801 40
Pull stud sealed suitable for steep tapers 40	308660 40
Pull stud Mori-Seiki, sealed, form A suitable for steep tapers 40	308625 40
Pull stud Form A suitable for steep tapers 40	308600 40
Torque insert for Pull studs to DIN 69872 suitable for ISO taper size 40	308810 40
Pull stud Mazak sealed, form A suitable for steep tapers 40M	308670 40M
Wrench for pull studs DIN ISO 7388-1 (formerly DIN 69872) suitable for ISO taper size 40	308820 40
Pull stud 90° sealed suitable for steep tapers 40	308795 40
Pull stud 45° sealed suitable for steep tapers 40	308760 40
Pull stud Hurco 45° with fit sealed suitable for steep tapers 40	308802 40
	308630 40

Pull stud Mori-Seiki, sealed, form A suitable for steep tapers 40

Pull stud 60° sealed suitable for steep tapers 40	308785 40
---	-----------

Pull stud sealed, form B suitable for steep tapers 40	308650 40
---	-----------

Torque insert for Pull studs to SO 7388 suitable for ISO taper size 40	308812 40
--	-----------

Special pull stud with no internal thread sealed suitable for steep tapers 40	308720 40
---	-----------

Pull stud Form B suitable for steep tapers 40	308640 40
---	-----------

Pull stud stud sealed, form A suitable for steep tapers 40	308610 40
--	-----------

Pull stud Hurco 90° with fit sealed suitable for steep tapers 40	308806 40
--	-----------

Pull stud, 18CrNiMo7 Form A suitable for steep tapers 40	308605 40
--	-----------

Pull stud, 18CrNiMo7 sealed, form B suitable for steep tapers 40	308615 40
--	-----------

Pull stud sealed, form B suitable for steep tapers 40	308620 40
---	-----------

Special pull stud with internal thread suitable for steep tapers 40	308740 40
---	-----------

Wrench for pull studs ISO 7388 suitable for ISO taper size 40	308830 40
---	-----------

Special pull stud with no internal thread sealed suitable for steep tapers 40	308700 40
---	-----------

Pull stud 90° sealed suitable for steep tapers 40	308790 40
---	-----------