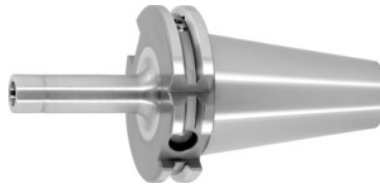


Garant
**Arbor for screw-in milling cutters with thread, SK 40, Thread M × Length L1:
M6X25**

Order data

Order number	301309 M6X25
GTIN	4045197706683
Item class	31A

Description
Version:

Plain design.

Application:

To take screw-in milling cutters with thread.

Optional extras:

Pull studs (PS) No. 308600 – 308806, PS wrenches No. 308820 – 308835.

Machining strategy: HSC

Overhang dimension A: 44 mm

Bore $\varnothing D_1$ tolerance IT6: 6.5 mm

$\varnothing D_2$: 10 mm

External $\varnothing D$: 13 mm

Reach L_1 : 25 mm

L_2 : 5 mm

Technical description

$\varnothing D_2$	10 mm
Bore $\varnothing D_1$ tolerance IT6	6.5 mm
Thread M	M6×25
Reach L_1	25 mm
L_2	5 mm

Overhang dimension A	44 mm
External Ø D	13 mm
Adapter	SK 40
Arbor standard	ISO 7388-1
Shape	ADB
Balance quality G at rotational speed	G 2.5 at 25,000 rpm
Concentricity	≤ 3 µm
Machining strategy	HSC
Type of product	Threaded copy mill arbor

Accessories

Special pull stud with no internal thread sealed suitable for steep tapers 40	308720 40
Pull stud 90° sealed suitable for steep tapers 40	308795 40
Pull stud, 18CrNiMo7 sealed, form B suitable for steep tapers 40	308615 40
Pull stud Hurco 90° with fit sealed suitable for steep tapers 40	308806 40
Special pull stud with no internal thread sealed suitable for steep tapers 40	308700 40
Torque insert for Pull studs to DIN 69872 suitable for ISO taper size 40	308810 40
Pull stud sealed, form B suitable for steep tapers 40	308620 40
Pull stud 45° sealed suitable for steep tapers 40	308760 40
Pull stud 90° sealed suitable for steep tapers 40	308790 40
Wrench for pull studs ISO 7388 suitable for ISO taper size 40	308830 40
Wrench for pull studs DIN ISO 7388-1 (formerly DIN 69872) suitable for ISO taper size 40	308820 40
Pull stud sealed suitable for steep tapers 40	308635 40

Torque insert for Pull studs to SO 7388 suitable for ISO taper size 40	308812 40
Pull stud Hurco 45° with fit sealed suitable for steep tapers 40	308802 40
Pull stud Form B suitable for steep tapers 40	308640 40
Pull stud Mori-Seiki, sealed, form A suitable for steep tapers 40	308630 40
Pull stud Form A suitable for steep tapers 40	308600 40
Pull stud, 18CrNiMo7 Form A suitable for steep tapers 40	308605 40
Pull stud stud sealed, form A suitable for steep tapers 40	308610 40
Pull stud Hurco 45° with bore and fit sealed suitable for steep tapers 40	308801 40
Special pull stud with internal thread suitable for steep tapers 40	308740 40
Pull stud Mori-Seiki, sealed, form A suitable for steep tapers 40	308625 40
Pull stud 45° sealed suitable for steep tapers 40	308765 40
Pull stud 60° sealed suitable for steep tapers 40	308785 40
Pull stud sealed, form B suitable for steep tapers 40	308650 40
Pull stud Mazak sealed, form A suitable for steep tapers 40M	308670 40M
Pull stud sealed suitable for steep tapers 40	308660 40