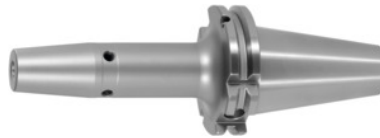




## Shrink-fit chuck, SK 40 short, Clamping range $\varnothing$ D1: 6 mm



### Order data

Order number	302251 6
GTIN	2050001689559
Item class	33W

### Description

#### Version:

- **High-temperature steel.**
- **Size 3 -5 for carbide, from size 6 for HSS and carbide.**
- **All shanks hard turned (for smooth running!).**
- **With Balluffchip bore.**

Glass bead blasted.

#### Application:

For clamping tools with parallel shank to h6 tolerance.  
Suitable for inductive, contact, and hot-air shrink units.

#### Optional extras:

Pull studs (PS) No. 308600 – 308800. PS wrenches No. 308820 – 308835, Shrink-fit chuck extensions No. 302410 – 302419. Shrink-fit units, accessories No. 354210 – 354450, balancing screws set No. 309906 size 180.

Machining strategy: HPC

Overhang dimension A: 80 mm

External  $\varnothing$  D: 27 mm

$\varnothing$  D<sub>2</sub>: 21 mm

### Technical description

Overhang dimension A	80 mm
$\varnothing$ D <sub>2</sub>	21 mm
Clamping $\varnothing$ D <sub>1</sub>	6 mm
External $\varnothing$ D	27 mm

Adapter	SK 40 short
Arbor standard	ISO 7388-1
Shape	ADB
Balance quality G at rotational speed	G 2.5 at 25,000 rpm
Concentricity	≤ 3 µm
Machining strategy	HSC
Machining strategy	HPC
Type of product	Shrink-fit chuck

## Accessories

Shrink-fit chuck extension 4.5° without length adjustment screw Ø d / Ø D1 20/6 mm	302416 20/6
Pull stud 90° sealed suitable for steep tapers 40	308790 40
Pull stud 90° sealed suitable for steep tapers 40	308795 40
Pull stud, 18CrNiMo7 sealed, form B suitable for steep tapers 40	308615 40
Wrench for pull studs DIN ISO 7388-1 (formerly DIN 69872) suitable for ISO taper size 40	308820 40
Wrench for pull studs ISO 7388 suitable for ISO taper size 40	308830 40
Pull stud, 18CrNiMo7 Form A suitable for steep tapers 40	308605 40
Pull stud Hurco 45° with fit sealed suitable for steep tapers 40	308802 40
Cooling adapter long 4.5° for clamping Ø 6-9 mm	354236 6-9
Cooling unit Type CU1	354215 CU1
Special pull stud with no internal thread sealed suitable for steep tapers 40	308700 40
Shrink-fit chuck extension 4.5° without length adjustment screw, with through coolant holes Ø d / Ø D1 20/6 mm	302414 20/6
	308806 40

Pull stud Hurco 90° with fit sealed suitable for steep tapers 40

Torque insert for Pull studs to SO 7388 suitable for ISO taper size 40

308812 40

Cooling adapter short 4.5° for clamping Ø 6-9 mm

354235 6-9

Screening plate for coil SU1 for clamping Ø 6-12 mm

354240 6-12

Pull stud sealed, form A suitable for steep tapers 40

308610 40

Shrink-fit unit Type SU1

354210 SU1

Pull stud sealed, form B suitable for steep tapers 40

308620 40

Pull stud 45° sealed suitable for steep tapers 40

308760 40

Torque insert for Pull studs to DIN 69872 suitable for ISO taper size 40

308810 40

Special pull stud with no internal thread sealed suitable for steep tapers 40

308720 40

Shrink fit chuck extension 3°, vibration-damped Ø d / Ø D1 20/6 mm

302415 20/6

Pull stud 45° sealed suitable for steep tapers 40

308765 40

Pull stud sealed suitable for steep tapers 40

308635 40

Shrink-fit chuck extension 4.5° with length adjustment screw Ø d / Ø D1 20/6 mm

302412 20/6

Pull stud sealed, form B suitable for steep tapers 40

308650 40

Pull stud Mori-Seiki, sealed, form A suitable for steep tapers 40

308625 40

Shrink-fit chuck extension 4.5° without length adjustment screw Ø d / Ø D1 20/6 mm

302410 20/6

Pull stud Form B suitable for steep tapers 40

308640 40

Pull stud Form A suitable for steep tapers 40

308600 40

Shrink-fit chuck extension 4.5° without length adjustment screw Ø d / Ø D1 16/6 mm

302410 16/6

Pull stud 60° sealed suitable for steep tapers 40

308785 40

Shrink-fit chuck extension 4.5° with length adjustment screw Ø d / Ø D1 16/6 mm

302412 16/6

308740 40

Special pull stud with internal thread suitable for steep tapers 40

Basic tool mounting for SK for SK taper shank 40 SK

354225 40

Pull stud sealed suitable for steep tapers 40

308660 40

Pull stud Mazak sealed, form A suitable for steep tapers 40M

308670 40M

Pull stud Hurco 45° with bore and fit sealed suitable for steep tapers 40

308801 40

Pull stud Mori-Seiki, sealed, form A suitable for steep tapers 40

308630 40