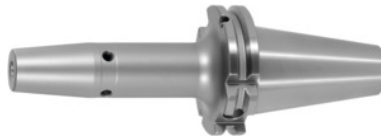




## Shrink-fit chuck, SK 40 A = 120, Clamping range $\varnothing$ D1: 4 mm



### Order data

Order number	302254 4
GTIN	2050001689665
Item class	33W

### Description

#### Version:

- **High-temperature steel.**
- **Size 3 -5 for carbide, from size 6 for HSS and carbide.**
- **All shanks hard turned (for smooth running!).**
- **With Balluffchip bore.**

Glass bead blasted.

#### Application:

For clamping tools with parallel shank to h6 tolerance.  
Suitable for inductive, contact, and hot-air shrink units.

#### Optional extras:

Pull studs (PS) No. 308600 – 308800. PS wrenches No. 308820 – 308835, Shrink-fit chuck extensions No. 302410 – 302419. Shrink-fit units, accessories No. 354210 – 354450, balancing screws set No. 309906 size 180.

External  $\varnothing$  D: 22 mm

$\varnothing$  D<sub>2</sub>: 15 mm

### Technical description

$\varnothing$ D <sub>2</sub>	15 mm
Clamping $\varnothing$ D <sub>1</sub>	4 mm
External $\varnothing$ D	22 mm
Adapter	SK 40 A = 120
Arbor standard	ISO 7388-1

Shape	ADB
Balance quality G at rotational speed	G 2.5 at 25,000 rpm
Concentricity	≤ 3 μm
Machining strategy	HSC
Machining strategy	HPC
Type of product	Shrink-fit chuck

## Accessories

Shrink-fit chuck extension 4.5° without length adjustment screw Ø d / Ø D1 12/4 mm	302410 12/4
Torque insert for Pull studs to SO 7388 suitable for ISO taper size 40	308812 40
Pull stud, 18CrNiMo7 Form A suitable for steep tapers 40	308605 40
Pull stud Form A suitable for steep tapers 40	308600 40
Pull stud Form B suitable for steep tapers 40	308640 40
Pull stud 90° sealed suitable for steep tapers 40	308795 40
Pull stud sealed suitable for steep tapers 40	308660 40
Pull stud sealed, form B suitable for steep tapers 40	308650 40
Special pull stud with internal thread suitable for steep tapers 40	308740 40
Cooling unit Type CU1	354215 CU1
Wrench for pull studs ISO 7388 suitable for ISO taper size 40	308830 40
Pull stud 60° sealed suitable for steep tapers 40	308785 40
Pull stud 90° sealed suitable for steep tapers 40	308790 40
Basic tool mounting for SK for SK taper shank 40 SK	354225 40
Pull stud, 18CrNiMo7 sealed, form B suitable for steep tapers 40	308615 40
Pull stud stud sealed, form A suitable for steep tapers 40	308610 40

Pull stud Mazak sealed, form A suitable for steep tapers 40M	308670 40M
Pull stud Mori-Seiki, sealed, form A suitable for steep tapers 40	308630 40
Pull stud Hurco 45° with bore and fit sealed suitable for steep tapers 40	308801 40
Pull stud 45° sealed suitable for steep tapers 40	308765 40
Pull stud Mori-Seiki, sealed, form A suitable for steep tapers 40	308625 40
Pull stud Hurco 90° with fit sealed suitable for steep tapers 40	308806 40
Shrink-fit chuck extension 4.5° without length adjustment screw $\varnothing d / \varnothing D1$ 16/4 mm	302410 16/4
Wrench for pull studs DIN ISO 7388-1 (formerly DIN 69872) suitable for ISO taper size 40	308820 40
Special pull stud with no internal thread sealed suitable for steep tapers 40	308700 40
Pull stud sealed, form B suitable for steep tapers 40	308620 40
Shrink-fit unit Type SU1	354210 SU1
Special pull stud with no internal thread sealed suitable for steep tapers 40	308720 40
Pull stud 45° sealed suitable for steep tapers 40	308760 40
Pull stud sealed suitable for steep tapers 40	308635 40
Pull stud Hurco 45° with fit sealed suitable for steep tapers 40	308802 40
Torque insert for Pull studs to DIN 69872 suitable for ISO taper size 40	308810 40