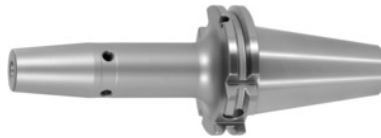




Shrink-fit chuck, SK 40 A = 120, Clamping range $\varnothing D_1$: 8 mm



Order data

Order number	302254 8
GTIN	2050001689696
Item class	33W

Description

Version:

- **High-temperature steel.**
- **Size 3 -5 for carbide, from size 6 for HSS and carbide.**
- **All shanks hard turned (for smooth running!).**
- **With Balluffchip bore.**

Glass bead blasted.

Application:

For clamping tools with parallel shank to h6 tolerance.
Suitable for inductive, contact, and hot-air shrink units.

Optional extras:

Pull studs (PS) No. 308600 – 308800. PS wrenches No. 308820 – 308835, Shrink-fit chuck extensions No. 302410 – 302419. Shrink-fit units, accessories No. 354210 – 354450, balancing screws set No. 309906 size 180.

External $\varnothing D$: 27 mm

$\varnothing D_2$: 21 mm

Technical description

$\varnothing D_2$	21 mm
Clamping $\varnothing D_1$	8 mm
External $\varnothing D$	27 mm
Adapter	SK 40 A = 120
Arbor standard	ISO 7388-1

Shape	ADB
Balance quality G at rotational speed	G 2.5 at 25,000 rpm
Concentricity	≤ 3 μm
Machining strategy	HSC
Machining strategy	HPC
Type of product	Shrink-fit chuck

Accessories

Wrench for pull studs DIN ISO 7388-1 (formerly DIN 69872) suitable for ISO taper size 40	308820 40
Torque insert for Pull studs to SO 7388 suitable for ISO taper size 40	308812 40
Pull stud sealed, form B suitable for steep tapers 40	308650 40
Shrink-fit chuck extension 4.5° without length adjustment screw, with through coolant holes Ø d / Ø D1 25/8 mm	302414 25/8
Shrink-fit chuck extension 4.5° without length adjustment screw Ø d / Ø D1 20/8 mm	302410 20/8
Basic tool mounting for SK for SK taper shank 40 SK	354225 40
Pull stud, 18CrNiMo7 Form A suitable for steep tapers 40	308605 40
Pull stud 90° sealed suitable for steep tapers 40	308790 40
Cooling adapter short 4.5° for clamping Ø 6-9 mm	354235 6-9
Pull stud Mazak sealed, form A suitable for steep tapers 40M	308670 40M
Pull stud, 18CrNiMo7 sealed, form B suitable for steep tapers 40	308615 40
Pull stud Form A suitable for steep tapers 40	308600 40
Pull stud 60° sealed suitable for steep tapers 40	308785 40
Shrink-fit chuck extension 4.5° without length adjustment screw Ø d / Ø D1 20/8 mm	302416 20/8
Pull stud sealed suitable for steep tapers 40	308635 40

Shrink-fit chuck extension 4.5° without length adjustment screw $\varnothing d / \varnothing D1$ 25/8 mm	302410 25/8
Pull stud 45° sealed suitable for steep tapers 40	308760 40
Shrink-fit unit Type SU1	354210 SU1
Pull stud Hurco 45° with fit sealed suitable for steep tapers 40	308802 40
Pull stud sealed, form B suitable for steep tapers 40	308620 40
Pull stud 45° sealed suitable for steep tapers 40	308765 40
Shrink fit chuck extension 3°, vibration-damped $\varnothing d / \varnothing D1$ 20/8 mm	302415 20/8
Pull stud Mori-Seiki, sealed, form A suitable for steep tapers 40	308625 40
Torque insert for Pull studs to DIN 69872 suitable for ISO taper size 40	308810 40
Special pull stud with no internal thread sealed suitable for steep tapers 40	308720 40
Pull stud stud sealed, form A suitable for steep tapers 40	308610 40
Shrink-fit chuck extension 4.5° with length adjustment screw $\varnothing d / \varnothing D1$ 25/8 mm	302412 25/8
Pull stud Form B suitable for steep tapers 40	308640 40
Pull stud Mori-Seiki, sealed, form A suitable for steep tapers 40	308630 40
Shrink-fit chuck extension 4.5° with length adjustment screw $\varnothing d / \varnothing D1$ 20/8 mm	302412 20/8
Cooling unit Type CU1	354215 CU1
Special pull stud with internal thread suitable for steep tapers 40	308740 40
Pull stud Hurco 45° with bore and fit sealed suitable for steep tapers 40	308801 40
Special pull stud with no internal thread sealed suitable for steep tapers 40	308700 40
Pull stud Hurco 90° with fit sealed suitable for steep tapers 40	308806 40
Screening plate for coil SU1 for clamping \varnothing 6-12 mm	354240 6-12

Pull stud 90° sealed suitable for steep tapers 40	308795 40
Cooling adapter long 4.5° for clamping Ø 6-9 mm	354236 6-9
Wrench for pull studs ISO 7388 suitable for ISO taper size 40	308830 40
Pull stud sealed suitable for steep tapers 40	308660 40
Shrink-fit chuck extension 4.5° without length adjustment screw Ø d / Ø D1 25/8 mm	302416 25/8