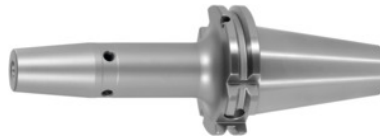




## Shrink-fit chuck, SK 50 short, Clamping range $\varnothing$ D1: 12 mm



### Order data

|              |               |
|--------------|---------------|
| Order number | 302288 12     |
| GTIN         | 2050001689948 |
| Item class   | 33W           |

### Description

#### Version:

- **High-temperature steel.**
- **Size 3 -5 for carbide, from size 6 for HSS and carbide.**
- **All shanks hard turned (for smooth running!).**
- **With Balluffchip bore.**

Glass bead blasted.

#### Application:

For clamping tools with parallel shank to h6 tolerance.  
Suitable for inductive, contact, and hot-air shrink units.

#### Optional extras:

Pull studs (PS) No. 308600 – 308800. PS wrenches No. 308820 – 308835, Shrink-fit chuck extensions No. 302410 – 302419. Shrink-fit units, accessories No. 354210 – 354450, balancing screws set No. 309906 size 180.

Machining strategy: HPC

Overhang dimension A: 80 mm

External  $\varnothing$  D: 32 mm

$\varnothing$  D<sub>2</sub>: 24 mm

### Technical description

|                                       |       |
|---------------------------------------|-------|
| Clamping $\varnothing$ D <sub>1</sub> | 12 mm |
| Overhang dimension A                  | 80 mm |
| $\varnothing$ D <sub>2</sub>          | 24 mm |
| External $\varnothing$ D              | 32 mm |

|                                       |                     |
|---------------------------------------|---------------------|
| Adapter                               | SK 50 short         |
| Arbor standard                        | ISO 7388-1          |
| Shape                                 | ADB                 |
| Balance quality G at rotational speed | G 2.5 at 25,000 rpm |
| Concentricity                         | ≤ 3 µm              |
| Machining strategy                    | HSC                 |
| Machining strategy                    | HPC                 |
| Type of product                       | Shrink-fit chuck    |

## Accessories

|   |              |
|---|--------------|
| Shrink-fit unit Type SU1  | 354210 SU1   |
| Screening plate for coil SU1 for clamping Ø 12-20 mm                                | 354240 12-20 |
| Pull stud, 18CrNiMo7 sealed, form B suitable for steep tapers 50                    | 308615 50    |
| Special pull stud with internal thread suitable for steep tapers 50                 | 308740 50    |
| Shrink-fit chuck extension 4.5° without length adjustment screw Ø d / Ø D1 25/12 mm | 302410 25/12 |
| Shrink-fit chuck extension 4.5° without length adjustment screw Ø d / Ø D1 32/12 mm | 302416 32/12 |
| Wrench for pull studs ISO 7388 suitable for ISO taper size 50                       | 308830 50    |
| Pull stud Form B suitable for steep tapers 50                                       | 308640 50    |
| Pull stud 60° sealed suitable for steep tapers 50                                   | 308785 50    |
| Shrink fit chuck extension 3°, vibration-damped Ø d / Ø D1 20/12 mm                 | 302415 20/12 |
| Pull stud stud sealed, form A suitable for steep tapers 50                          | 308610 50    |
| Shrink-fit chuck extension 4.5° without length adjustment screw Ø d / Ø D1 25/12 mm | 302416 25/12 |
| Screening plate for coil SU1 for clamping Ø 6-12 mm                                 | 354240 6-12  |

|   |               |
|---|---------------|
| Shrink-fit chuck extension 4.5° without length adjustment screw, with through coolant holes $\varnothing d / \varnothing D1$ 32/12 mm | 302414 32/12  |
| Pull stud 45° sealed suitable for steep tapers 50   | 308765 50     |
| Cooling adapter short 4.5° for clamping $\varnothing 9,1-12$ mm   | 354235 9,1-12 |
| Cooling unit Type CU1   | 354215 CU1    |
| Pull stud 45° sealed suitable for steep tapers 50   | 308760 50     |
| Special pull stud with no internal thread sealed suitable for steep tapers 50   | 308720 50     |
| Shrink fit chuck extension 3°, vibration-damped $\varnothing d / \varnothing D1$ 25/12 mm   | 302417 25/12  |
| Cooling adapter long 4.5° for clamping $\varnothing 9,1-12$ mm  | 354236 9,1-12 |
| Pull stud 90° sealed suitable for steep tapers 50   | 308795 50     |
| Shrink-fit chuck extension 4.5° with length adjustment screw $\varnothing d / \varnothing D1$ 32/12 mm                                | 302412 32/12  |
| Pull stud Form A suitable for steep tapers 50   | 308600 50     |
| Special pull stud with no internal thread sealed suitable for steep tapers 50   | 308700 50     |
| Shrink-fit chuck extension 4.5° with length adjustment screw $\varnothing d / \varnothing D1$ 25/12 mm                                | 302412 25/12  |
| Torque insert for Pull studs to SO 7388 suitable for ISO taper size 50  | 308812 50     |
| Wrench for pull studs DIN ISO 7388-1 (formerly DIN 69872) suitable for ISO taper size 50  | 308820 50     |
| Pull stud sealed, form B suitable for steep tapers 50   | 308650 50     |
| Pull stud sealed, form B suitable for steep tapers 50   | 308620 50     |
| Pull stud 90° sealed suitable for steep tapers 50   | 308790 50     |
| Shrink-fit chuck extension 4.5° without length adjustment screw $\varnothing d / \varnothing D1$ 32/12 mm                             | 302410 32/12  |
| Pull stud, 18CrNiMo7 Form A suitable for steep tapers 50  | 308605 50     |
| Torque insert for Pull studs to DIN 69872 suitable for ISO taper size 50  | 308810 50     |
| Basic tool mounting for SK for SK taper shank 50 SK   | 354225 50     |
| Pull stud sealed suitable for steep tapers 50   | 308660 50     |

