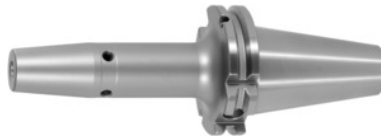




Shrink-fit chuck, SK 50 short, Clamping range \varnothing D1: 16 mm



Order data

Order number	302288 16
GTIN	2050001689962
Item class	33W

Description

Version:

- **High-temperature steel.**
- **Size 3 -5 for carbide, from size 6 for HSS and carbide.**
- **All shanks hard turned (for smooth running!).**
- **With Balluffchip bore.**

Glass bead blasted.

Application:

For clamping tools with parallel shank to h6 tolerance.
Suitable for inductive, contact, and hot-air shrink units.

Optional extras:

Pull studs (PS) No. 308600 – 308800. PS wrenches No. 308820 – 308835, Shrink-fit chuck extensions No. 302410 – 302419. Shrink-fit units, accessories No. 354210 – 354450, balancing screws set No. 309906 size 180.

Machining strategy: HPC

Overhang dimension A: 80 mm

External \varnothing D: 34 mm

\varnothing D₂: 27 mm

Technical description

\varnothing D ₂	27 mm
Overhang dimension A	80 mm
Clamping \varnothing D ₁	16 mm
External \varnothing D	34 mm

Adapter	SK 50 short
Arbor standard	ISO 7388-1
Shape	ADB
Balance quality G at rotational speed	G 2.5 at 25,000 rpm
Concentricity	≤ 3 μm
Machining strategy	HSC
Machining strategy	HPC
Type of product	Shrink-fit chuck

Accessories

Cooling unit Type CU1	354215 CU1
Pull stud Form A suitable for steep tapers 50	308600 50
Cooling adapter short 4.5° for clamping Ø 12,1-16 mm	354235 12,1-16
Shrink-fit unit Type SU1	354210 SU1
Special pull stud with no internal thread sealed suitable for steep tapers 50	308700 50
Shrink-fit chuck extension 4.5° without length adjustment screw, with through coolant holes Ø d / Ø D1 32/16 mm	302414 32/16
Pull stud 45° sealed suitable for steep tapers 50	308760 50
Wrench for pull studs DIN ISO 7388-1 (formerly DIN 69872) suitable for ISO taper size 50	308820 50
Special pull stud with no internal thread sealed suitable for steep tapers 50	308720 50
Wrench for pull studs ISO 7388 suitable for ISO taper size 50	308830 50
Shrink-fit chuck extension 4.5° with length adjustment screw Ø d / Ø D1 25/16 mm	302412 25/16
Shrink fit chuck extension 3°, vibration-damped Ø d / Ø D1 25/16 mm	302417 25/16
Pull stud, 18CrNiMo7 Form A suitable for steep tapers 50	308605 50

Pull stud sealed suitable for steep tapers 50	308660 50
Pull stud 60° sealed suitable for steep tapers 50	308785 50
Shrink-fit chuck extension 4.5° without length adjustment screw $\varnothing d / \varnothing D1$ 25/16 mm	302416 25/16
Pull stud 45° sealed suitable for steep tapers 50	308765 50
Pull stud 90° sealed suitable for steep tapers 50	308795 50
Pull stud 90° sealed suitable for steep tapers 50	308790 50
Shrink fit chuck extension 3°, vibration-damped $\varnothing d / \varnothing D1$ 32/16 mm	302419 32/16
Pull stud, 18CrNiMo7 sealed, form B suitable for steep tapers 50	308615 50
Shrink-fit chuck extension 4.5° with length adjustment screw $\varnothing d / \varnothing D1$ 32/16 mm	302412 32/16
Special pull stud with internal thread suitable for steep tapers 50	308740 50
Torque insert for Pull studs to SO 7388 suitable for ISO taper size 50	308812 50
Pull stud stud sealed, form A suitable for steep tapers 50	308610 50
Shrink-fit chuck extension 4.5° without length adjustment screw $\varnothing d / \varnothing D1$ 25/16 mm	302410 25/16
Shrink-fit chuck extension 4.5° without length adjustment screw $\varnothing d / \varnothing D1$ 32/16 mm	302416 32/16
Torque insert for Pull studs to DIN 69872 suitable for ISO taper size 50	308810 50
Cooling adapter long 4.5° for clamping $\varnothing 12,1-16$ mm	354236 12,1-16
Pull stud sealed, form B suitable for steep tapers 50	308650 50
Screening plate for coil SU1 for clamping $\varnothing 12-20$ mm	354240 12-20
Shrink-fit chuck extension 4.5° without length adjustment screw $\varnothing d / \varnothing D1$ 32/16 mm	302410 32/16
Pull stud sealed, form B suitable for steep tapers 50	308620 50
Pull stud Form B suitable for steep tapers 50	308640 50
Basic tool mounting for SK for SK taper shank 50 SK	354225 50