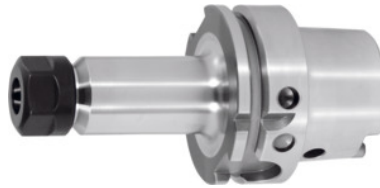


Garant
ER collet chuck, HSK-A 63 long, for ER collet size: 20 ER

Order data

Order number	305390 20
GTIN	4045197762542
Item class	31A

Description
Version:

With Balluffchip bore.

With Ballufchip bore.

Application:

For clamping tools with plain shanks in ER collets to DIN 6499 – Form A and B.

Supplied with:

Coated high-speed clamping nut.

Optional extras:

Coolant tube No. 309880, socket wrench for coolant tubes No. 309890, ER collets No. 308881 – 309434, ER chuck key No. 309680 or 613300.

Clamping range: 1 - 13 mm

Overhang dimension A: 100 mm

External Ø D: 34 mm

Technical description

Overhang dimension A	100 mm
for ER collets	20
External Ø D	34 mm
Clamping range	1 - 13 mm
Adapter	HSK-A 63 long

Arbor standard	DIN 69882-6
Arbor standard	DIN 69893
Arbor standard	ISO 12164-1
Shape	A
Balance quality G at rotational speed	G 2.5 at 25,000 rpm
Concentricity	≤ 3 µm
Machining strategy	HSC
Balluffchip bore	yes
Type of product	Collet chuck

Accessories

ER collet Nominal clamping Ø d 2,5 mm	308911 2,5
ER collet Nominal clamping Ø d 3 mm	308911 3
ER collet with seal Nominal clamping Ø d 8 mm	308916 8
ER collet Nominal clamping Ø d 6 mm	308911 6
ER collet set 7 pieces 3, 4, 5, 6, 8, 10, 12 mm with seal	309018
ER collet with seal Nominal clamping Ø d 5 mm	308916 5
ER collet Nominal clamping Ø d 3 mm	308930 3
ER collet Nominal clamping Ø d 9 mm	308930 9
ER collet Nominal clamping Ø d 2 mm	308930 2
ER collet Nominal clamping Ø d 10 mm	308911 10
ER collet with seal Nominal clamping Ø d 3 mm	308916 3
ER collet Nominal clamping Ø d 1,5 mm	308911 1,5
ER collet with seal Nominal clamping Ø d 6 mm	308916 6
ER collet Nominal clamping Ø d 13 mm	308930 13
ER collet with seal Nominal clamping Ø d 4 mm	308916 4
ER collet with seal Nominal clamping Ø d 12 mm	308916 12
ER collet with seal Nominal clamping Ø d 11 mm	308916 11

ER collet with seal Nominal clamping Ø d 7 mm	308916 7
Single open ended spanner Width across flats 25 mm	613300 25
ER collet Nominal clamping Ø d 4 mm	308911 4
ER collet Nominal clamping Ø d 10 mm	308930 10
ER collet Nominal clamping Ø d 4 mm	308930 4
ER collet Nominal clamping Ø d 12 mm	308930 12
ER collet with seal Nominal clamping Ø d 9 mm	308916 9
ER collet Nominal clamping Ø d 8 mm	308930 8
ER collet with seal Nominal clamping Ø d 10 mm	308916 10
ER collet Nominal clamping Ø d 2 mm	308911 2
ER collet Nominal clamping Ø d 6 mm	308930 6
ER collet Nominal clamping Ø d 5 mm	308911 5
ER collet Nominal clamping Ø d 7 mm	308930 7
ER collet Nominal clamping Ø d 5 mm	308930 5
ER collet Nominal clamping Ø d 8 mm	308911 8
ER collet set 12 pieces 2–13 mm	309016
ER collet Nominal clamping Ø d 1 mm	308911 1
ER collet Nominal clamping Ø d 11 mm	308930 11
ER collet Nominal clamping Ø d 1 mm	308930 1
ER collet Nominal clamping Ø d 7 mm	308911 7
ER collet Nominal clamping Ø d 9 mm	308911 9