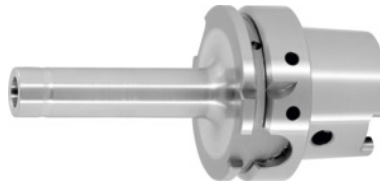


**Garant**
**Arbor for screw-in milling cutters with thread cylindrical form, HSK-A 63,  
Thread M × Length L1: M16X100**

**Order data**

|              |                |
|--------------|----------------|
| Order number | 307042 M16X100 |
| GTIN         | 4045197707031  |
| Item class   | 31A            |

**Description**
**Version:**

Plain design.  
With Balluffchip bore.

**Application:**

To take screw-in milling cutters with thread.

**Optional extras:**

Extensions No. 301358, reducers No. 301359, coolant pipe No. 309880, socket for coolant pipe No. 309890.

**Note:**

Densimet arbors and solid carbide extensions for screw-in milling cutters No. 301373 – 301379 and No. 301362 – 301368.

Machining strategy: HSC

Overhang dimension A: 126 mm

Bore  $\varnothing D_1$ : 17 mm

$\varnothing D_2$ : 29 mm

Reach  $L_1$ : 100 mm

$L_2$ : 5 mm

**Technical description**

|                      |        |
|----------------------|--------|
| Overhang dimension A | 126 mm |
| Reach $L_1$          | 100 mm |

|                                       |                          |
|---------------------------------------|--------------------------|
| Ø D <sub>2</sub>                      | 29 mm                    |
| Thread M                              | M16×100                  |
| L <sub>2</sub>                        | 5 mm                     |
| Bore Ø D <sub>1</sub>                 | 17 mm                    |
| Adapter                               | HSK-A 63                 |
| Arbor standard                        | DIN 69893                |
| Arbor standard                        | ISO 12164-1              |
| Shape                                 | A                        |
| Balance quality G at rotational speed | G 2.5 at 25,000 rpm      |
| Concentricity                         | ≤ 3 µm                   |
| Machining strategy                    | HSC                      |
| Type of product                       | Threaded copy mill arbor |