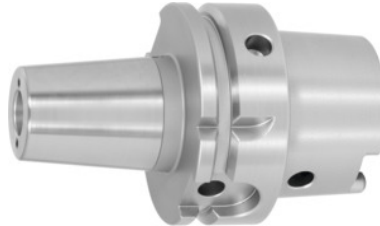


## Garant

**Shrink-fit chuck with cooling channel bores and strengthened walls, HSK-A 63 short, Clamping range  $\varnothing$  D1: 8 mm**



### Order data

Order number	308296 8
GTIN	4045197701497
Item class	31A

### Description

#### Version:

- High-temperature steel.
- Integral tool length adjustment, adjustment track 10 mm.
- For HSS and carbide.
- Shanks hard turned (for smooth running!).
- With Balluffchip bore
- Bead-blasted
- With cooling channel bores, tapped for plugging.

#### Advantage:

**Optimised design. Vibration-damping effect, better workpiece surface finish, protects spindle and tool.**

#### Application:

For clamping tools with parallel shank to h6 tolerance. Suitable for inductive, contact and hot-air shrink units.

#### Optional extras:

Shrink-fit chuck adaptors No. 302410 – 302416. Shrink-fit units, accessories No. 354210 – 304755.

Cooling channel bore: lockable

Overhang dimension A: 70 mm

External  $\varnothing$  D: 28.8 mm

$\varnothing$  D<sub>2</sub>: 22 mm

## Technical description

Ø D <sub>2</sub>	22 mm
Clamping Ø D <sub>1</sub>	8 mm
Overhang dimension A	70 mm
External Ø D	28.8 mm
Cooling channel bore	lockable
Adapter	HSK-A 63 short
Arbor standard	DIN 69893
Arbor standard	ISO 12164-1
Shape	A
Balance quality G at rotational speed	G 2.5 at 25,000 rpm
Concentricity	≤ 3 µm
Machining strategy	HPC
Machining strategy	HSC
Type of product	Shrink-fit chuck

## Accessories

Cooling adapter long 4.5° for clamping Ø 6-9 mm	354236 6-9
Shrink-fit unit Type SU1	354210 SU1
Subframe cupboard	354290
Screening plate for coil SU1 for clamping Ø 6-12 mm	354240 6-12
Cooling unit Type CU1	354215 CU1
Cooling adapter short 4.5° for clamping Ø 6-9 mm	354235 6-9