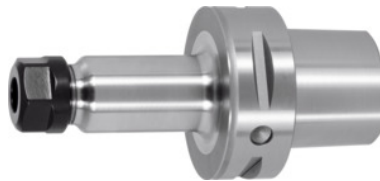


Garant
ER collet chuck, PSC 63 A = 100, for ER collet size: 25 ER

Order data

Order number	308522 25
GTIN	4045197471659
Item class	31C

Description
Version:

- **With Balluffchip bore.**
- **All shanks hard turned (for smooth running!).**
- **Mating faces of the PSC internal contour machined.**

Application:

For clamping tools with plain shank in ER collets to DIN 6499 Form A and B.

Supplied with:

Coated high-speed clamping nut.

Optional extras:

ER collets No. 308881 – 309434. ER chuck key No. 309680 or 613300.

Coolant tube and assembling key for coolant tubes No. 309885 and 309893.

Through-coolant: yes

Clamping range: 1 - 16 mm

External Ø D: 42 mm

Spare GARANT high-speed clamping nut No. 309610: 25

Technical description

for ER collets	25
Clamping range	1 - 16 mm
Spare GARANT high-speed clamping nut No. 309610	25
External Ø D	42 mm

Adapter	PSC 63 A = 100
Arbor standard	ISO 26623-2
Balance quality G at rotational speed	G 2.5 at 25,000 rpm
Concentricity	≤ 3 µm
Machining strategy	HSC
Through-coolant	yes
Type of product	Collet chuck

Accessories

ER collet with seal Nominal clamping Ø d 6 mm	308946 6
ER collet Nominal clamping Ø d 14 mm	308960 14
ER collet with seal Nominal clamping Ø d 10 mm	308946 10
ER collet Nominal clamping Ø d 2 mm	308960 2
ER collet with seal Nominal clamping Ø d 15 mm	308946 15
ER collet with seal and spray nozzles Nominal clamping Ø d 11 mm	308962 11
ER collet Nominal clamping Ø d 7 mm	308941 7
ER collet Nominal clamping Ø d 8 mm	308941 8
ER collet set 15 pieces 2–16 mm	309240
ER collet Nominal clamping Ø d 9 mm	308941 9
ER collet Nominal clamping Ø d 8 mm	308960 8
ER collet Nominal clamping Ø d 12 mm	308941 12
ER collet Nominal clamping Ø d 4 mm	308941 4
ER collet with seal Nominal clamping Ø d 8 mm	308946 8
ER collet Nominal clamping Ø d 2 mm	308941 2
ET collet for thread tapping, with axial compensation Nominal clamping Ø d 4,5 mm	309430 4,5
ER collet Nominal clamping Ø d 10 mm	308941 10

ER collet with seal Nominal clamping Ø d 15 mm	308959 15
ER collet with seal Nominal clamping Ø d 12 mm	308959 12
ER collet Nominal clamping Ø d 16 mm	308960 16
ER collet with seal Nominal clamping Ø d 9 mm	308946 9
ER collet with seal and spray nozzles Nominal clamping Ø d 6 mm	308962 6
ER collet with seal Nominal clamping Ø d 14 mm	308959 14
ER collet with seal Nominal clamping Ø d 16 mm	308946 16
ER collet Nominal clamping Ø d 15 mm	308960 15
ER collet with seal Nominal clamping Ø d 6 mm	308959 6
ER collet with seal Nominal clamping Ø d 3 mm	308959 3
ER collet Nominal clamping Ø d 9 mm	308960 9
ER collet with seal Nominal clamping Ø d 10 mm	308959 10
ET collet for thread tapping, with axial compensation Nominal clamping Ø d 8 mm	309430 8
ER collet Nominal clamping Ø d 5 mm	308960 5
ER collet with seal Nominal clamping Ø d 3 mm	308946 3
ER collet Nominal clamping Ø d 10 mm	308960 10
ER collet Nominal clamping Ø d 12 mm	308960 12
ET collet for thread tapping, with axial compensation Nominal clamping Ø d 6 mm	309430 6
ET collet for thread tapping, with axial compensation Nominal clamping Ø d 9 mm	309430 9
ER chuck key for ER collet chuck 25	309680 25
ER collet Nominal clamping Ø d 7 mm	308960 7
ER collet with seal Nominal clamping Ø d 5 mm	308959 5
ER collet Nominal clamping Ø d 14 mm	308941 14
ER collet with seal and spray nozzles Nominal clamping Ø d 4 mm	308962 4
ER collet Nominal clamping Ø d 5 mm	308941 5
	308962 8

ER collet with seal and spray nozzles Nominal clamping Ø d 8 mm	
ER collet with seal and spray nozzles Nominal clamping Ø d 13 mm	308962 13
ER collet with seal and spray nozzles Nominal clamping Ø d 16 mm	308962 16
ER collet Nominal clamping Ø d 16 mm	308941 16
ER collet with seal Nominal clamping Ø d 13 mm	308959 13
ER collet with seal Nominal clamping Ø d 4 mm	308959 4
ER collet with seal and spray nozzles Nominal clamping Ø d 15 mm	308962 15
ER collet with seal and spray nozzles Nominal clamping Ø d 7 mm	308962 7
ER collet with seal Nominal clamping Ø d 8 mm	308959 8
ER collet set 15 pieces 2–16 mm with seal	309244
ER collet Nominal clamping Ø d 4 mm	308960 4
ER collet Nominal clamping Ø d 11 mm	308941 11
ET collet for thread tapping, with axial compensation Nominal clamping Ø d 2,8 mm	309430 2,8
ER collet with seal and spray nozzles Nominal clamping Ø d 14 mm	308962 14
ER collet with seal and spray nozzles Nominal clamping Ø d 10 mm	308962 10
ER collet Nominal clamping Ø d 15 mm	308941 15
ER collet with seal Nominal clamping Ø d 9 mm	308959 9
ER collet with seal Nominal clamping Ø d 7 mm	308959 7
ER collet Nominal clamping Ø d 13 mm	308960 13
ET collet for thread tapping, with axial compensation Nominal clamping Ø d 3,5 mm	309430 3,5
ER collet Nominal clamping Ø d 11 mm	308960 11
ER collet with seal Nominal clamping Ø d 13 mm	308946 13
ER collet Nominal clamping Ø d 3 mm	308941 3

ER collet Nominal clamping Ø d 13 mm	308941 13
ER collet Nominal clamping Ø d 6 mm	308960 6
ER collet with seal Nominal clamping Ø d 16 mm	308959 16
HiRunER clamping wrench for torque wrench Type 25	309749 25
ET collet for thread tapping, with axial compensation Nominal clamping Ø d 7 mm	309430 7
ER collet with seal and spray nozzles Nominal clamping Ø d 12 mm	308962 12
ER collet with seal Nominal clamping Ø d 7 mm	308946 7
ER collet with seal and spray nozzles Nominal clamping Ø d 9 mm	308962 9
ET collet for thread tapping, with axial compensation Nominal clamping Ø d 10 mm	309430 10
ER collet with seal Nominal clamping Ø d 11 mm	308946 11
ER collet set 15 pieces 2–16 mm with seal and spray nozzles	309245
ER collet with seal and spray nozzles Nominal clamping Ø d 3 mm	308962 3
ER collet with seal Nominal clamping Ø d 14 mm	308946 14
ER collet with seal Nominal clamping Ø d 4 mm	308946 4
ER collet set 7 pieces 4–16 mm with seal	309022
ER collet with seal and spray nozzles Nominal clamping Ø d 5 mm	308962 5
ER collet with seal Nominal clamping Ø d 12 mm	308946 12
ER collet set 15 pieces 2–16 mm	309021
ER collet Nominal clamping Ø d 6 mm	308941 6
ER collet with seal Nominal clamping Ø d 11 mm	308959 11
ER collet with seal Nominal clamping Ø d 5 mm	308946 5
ER collet Nominal clamping Ø d 2,5 mm	308941 2,5
ER collet Nominal clamping Ø d 3 mm	308960 3