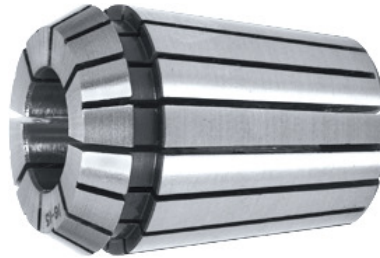


HOLEX®
ER collet, ER 40, Nominal clamping \varnothing d: 15 mm

Order data

Order number	309040 15
GTIN	4045197151773
Item class	32Z

Description
Version:

Through hardened and ground. Polished.

Note:

The collet clamping \varnothing range is always up to 1 mm less than nominal, e.g. \varnothing 10 – 9 mm, except for \varnothing 1, 1.5 and 2 (where it is only 0.5 mm).

Concentricity: $\leq 10 \mu\text{m}$

Overall length L: 46 mm

Technical description

Nominal clamping \varnothing d	15 mm
Adapter	ER 40
Standard	ISO 15488-B
Concentricity	$\leq 10 \mu\text{m}$
Type	472 E
External \varnothing D	41 mm
Overall length L	46 mm
Type of product	Clamping head

