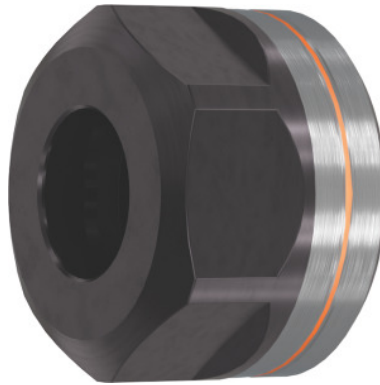


Garant**ER clamping nut High Speed, for ER: 16****Order data**

Order number	309610 16
GTIN	4045197291974
Item class	31Z

Description**Version:**

Thread and taper ground in a single setup for highest concentricity.

Nut coated for: lower friction and **increased clamping force** coupled with high wear resistance and corrosion resistance. **With hexagon** 25 AF.

Suitable for :

All standard ER collet chucks.

Optional extras:

ER clamping wrench, No. 309680 – 309740.

Single open ended spanner (for size 16), No. 613300 size 25.

Note:

Collet chuck and clamping nut are balanced separately!

Balance quality G at rotational speed: G 2.5 at 25,000 rpm

Overall length L: 18 mm

External Ø D: 28 mm

Thread: M22×1.5

maximum tightening torque: 80 Nm

Technical description

for ER	16 mm
maximum tightening torque	80 Nm
Overall length L	18 mm
Thread	M22×1.5
External Ø D	28 mm
Standard	DIN 6499 D
Balance quality G at rotational speed	G 2.5 at 25,000 rpm
Type of product	Collet chuck accessories

Accessories

Single open ended spanner Width across flats 25 mm	613300 25
----------------------------------------------------	-----------