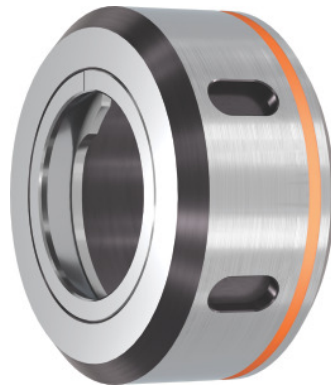


Garant
ER plain bearing clamping nut, for ER: 16

Order data

Order number	309612 16
GTIN	4045197645678
Item class	31Z

Description
Version:

Thread and taper ground in a single setup for highest concentricity.

With plain bearings, delivering lower friction and higher clamping force. **With hexagon 25 AF.**

Suitable for :

All standard ER collet chucks.

Optional extras:

ER clamping wrench, No. 309680 – 309740.

Single open ended spanner (for size 16), No. 613300 size 25.

Note:

Collet chuck and clamping nut are balanced separately!

Balance quality G at rotational speed: G 2.5 at 25,000 rpm

Overall length L: 18 mm

External Ø D: 32 mm

Thread: M22×1.5

maximum tightening torque: 80 Nm

Technical description

maximum tightening torque	80 Nm
---------------------------	-------

for ER	16 mm
Thread	M22×1.5
Overall length L	18 mm
External Ø D	32 mm
Standard	DIN 6499 D
Balance quality G at rotational speed	G 2.5 at 25,000 rpm
Type of product	Collet chuck accessories