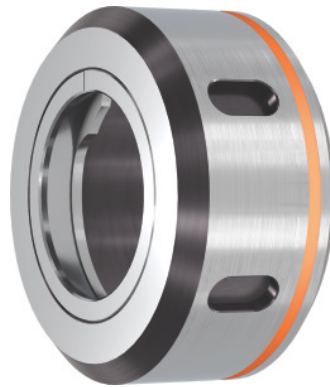


Garant
ER plain bearing clamping nut, for ER: 25

Order data

Order number	309612 25
GTIN	4045197645685
Item class	31Z

Description
Version:

Thread and taper ground in a single setup for highest concentricity.

With plain bearings, delivering lower friction and higher clamping force. **With slots.**

Suitable for :

All standard ER collet chucks.

Optional extras:

ER clamping wrench, No. 309680 – 309740.

Single open ended spanner (for size 16), No. 613300 size 25.

Note:

Collet chuck and clamping nut are balanced separately!

Balance quality G at rotational speed: G 2.5 at 25,000 rpm

Overall length L: 20.5 mm

External Ø D: 42 mm

Thread: M32×1.5

maximum tightening torque: 140 Nm

Technical description

Overall length L	20.5 mm
------------------	---------

Thread	M32×1.5
for ER	25 mm
maximum tightening torque	140 Nm
External Ø D	42 mm
Standard	DIN 6499 D
Balance quality G at rotational speed	G 2.5 at 25,000 rpm
Type of product	Collet chuck accessories