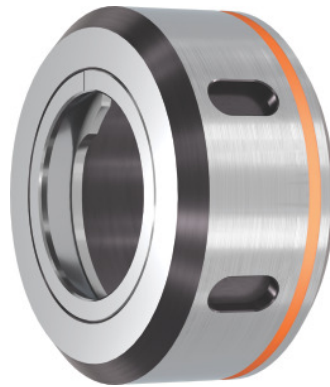


**Garant****ER plain bearing clamping nut, for ER: 32****Order data**

Order number	309612 32
GTIN	4045197645692
Item class	31Z

**Description****Version:**

Thread and taper ground in a single setup for highest concentricity.

With plain bearings, delivering lower friction and higher clamping force. **With slots.**

**Suitable for :**

All standard ER collet chucks.

**Optional extras:**

ER clamping wrench, No. 309680 – 309740.

Single open ended spanner (for size 16), No. 613300 size 25.

**Note:**

Collet chuck and clamping nut are balanced separately!

Balance quality G at rotational speed: G 2.5 at 25,000 rpm

Overall length L: 23 mm

External Ø D: 50 mm

Thread: M40×1.5

maximum tightening torque: 180 Nm

**Technical description**

Thread	M40×1.5
--------	---------

for ER	32 mm
Overall length L	23 mm
maximum tightening torque	180 Nm
External Ø D	50 mm
Standard	DIN 6499 D
Balance quality G at rotational speed	G 2.5 at 25,000 rpm
Type of product	Collet chuck accessories