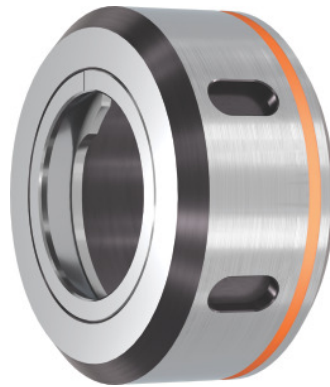


**Garant****ER plain bearing clamping nut, for ER: 40****Order data**

|              |               |
|--------------|---------------|
| Order number | 309612 40     |
| GTIN         | 4045197645708 |
| Item class   | 31Z           |

**Description****Version:**

Thread and taper ground in a single setup for highest concentricity.

With plain bearings, delivering lower friction and higher clamping force. **With slots.**

**Suitable for :**

All standard ER collet chucks.

**Optional extras:**

ER clamping wrench, No. 309680 – 309740.

Single open ended spanner (for size 16), No. 613300 size 25.

**Note:**

Collet chuck and clamping nut are balanced separately!

Balance quality G at rotational speed: G 2.5 at 25,000 rpm

Overall length L: 26 mm

External Ø D: 63 mm

Thread: M50×1.5

maximum tightening torque: 240 Nm

**Technical description**

|        |         |
|--------|---------|
| Thread | M50×1.5 |
|--------|---------|

|                                       |                          |
|---------------------------------------|--------------------------|
| for ER                                | 40 mm                    |
| Overall length L                      | 26 mm                    |
| maximum tightening torque             | 240 Nm                   |
| External Ø D                          | 63 mm                    |
| Standard                              | DIN 6499 D               |
| Balance quality G at rotational speed | G 2.5 at 25,000 rpm      |
| Type of product                       | Collet chuck accessories |