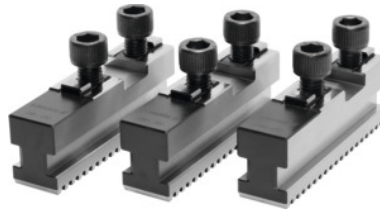




## Base jaw set, 3 pieces, straight teeth, for chuck type: 250



### Order data

Order number	313207 250
GTIN	2050001929013
Item class	33T

### Description

#### Application:

As the jaws can be changed or adjusted to the required diameter **in just a few seconds**, it is useful to have several jaw sets on hand ready for use at the machine. **This minimises set-up times.** The jaw units consist for example of several sets of base jaws with soft top jaws, which can be machined out to the required diameters. This rationalisation method is not only necessary for NC machines but also important for every lathe type.

To accept hard or soft top jaws. Fastening screws for top jaws are supplied.

Length L: 104 mm

Width B: 26 mm

Slot width A: 20 mm

Bore spacing b: 40 mm

Tenon width D: 12 mm

### Technical description

Slot width A	20 mm
Width B	26 mm
for chuck type	250 mm
Length L	104 mm
Tenon width D	12 mm
Bore spacing b	40 mm

Type of product

Self-centring chuck jaws