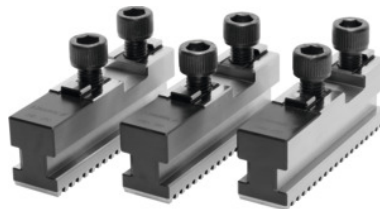




## Base jaw set, 3 pieces, straight teeth, for chuck type: 400



### Order data

Order number	313207 400
GTIN	2050001929037
Item class	33T

### Description

#### Application:

As the jaws can be changed or adjusted to the required diameter **in just a few seconds**, it is useful to have several jaw sets on hand ready for use at the machine. **This minimises set-up times.** The jaw units consist for example of several sets of base jaws with soft top jaws, which can be machined out to the required diameters. This rationalisation method is not only necessary for NC machines but also important for every lathe type.

To accept hard or soft top jaws. Fastening screws for top jaws are supplied.

Length L: 125 mm

Width B: 32 mm

Slot width A: 26 mm

Bore spacing b: 54 mm

Tenon width D: 12 mm

### Technical description

Length L	125 mm
for chuck type	400 mm
Slot width A	26 mm
Tenon width D	12 mm
Width B	32 mm
Bore spacing b	54 mm

Type of product

Self-centring chuck jaws