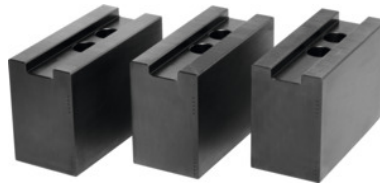




Top jaws set, 3 pieces, for chuck type: 165



Order data

Order number	313415 165
GTIN	2050001929471
Item class	33T

Description

Version:

Precision milled slots and **precision ground** serrations, **burnished**.

Material:

Quality product made of 16MnCr5.

Suitable for :

Heavy-duty chucks from Schunk, Röhms and other heavy-duty chuck manufacturers.

Optional extras:

T-nuts No. 313505 – 313605.

Note:

- **When fitting to a chuck, please check serrations, slot width (D), and hole spacing (a, b).**
- **Aluminium top jaws on request.**

Length L: 70 mm

Width B: 40 mm

Height H: 60 mm

Hole centre spacing a: 15 mm

Bore spacing b: 22 mm

Slot width D: 17 mm

Technical description

Width B	40 mm
Height H	60 mm
Length L	70 mm

for thread DIN 912	M12
Slot width D	17 mm
Bore spacing b	22 mm
for chuck type	165 mm
Hole centre spacing a	15 mm
Type of product	Heavy-duty lathe chuck jaws