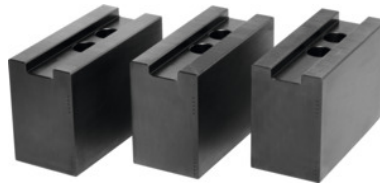




## Top jaws set, 3 pieces, for chuck type: 210



### Order data

Order number	313415 210
GTIN	2050001929488
Item class	33T

### Description

#### Version:

**Precision milled** slots and **precision ground** serrations, **burnished**.

#### Material:

Quality product made of 16MnCr5.

#### Suitable for :

**Heavy-duty chucks** from Schunk, Röhms and other heavy-duty chuck manufacturers.

#### Optional extras:

T-nuts No. 313505 – 313605.

#### Note:

- **When fitting to a chuck, please check serrations, slot width (D), and hole spacing (a, b).**
- **Aluminium top jaws on request.**

Length L: 90 mm

Width B: 40 mm

Height H: 60 mm

Hole centre spacing a: 25 mm

Bore spacing b: 22 mm

Slot width D: 17 mm

### Technical description

Height H	60 mm
Hole centre spacing a	25 mm
for thread DIN 912	M12

for chuck type	210 mm
Width B	40 mm
Slot width D	17 mm
Length L	90 mm
Bore spacing b	22 mm
Type of product	Heavy-duty lathe chuck jaws