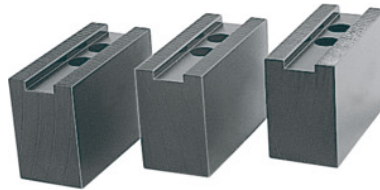




Top jaws set, 3 pieces, for chuck type: 200



Order data

Order number	313430 200
GTIN	4019208193410
Item class	32R

Description

Version:

Precision-milled slots and serrations, **not burnished**.

Material:

Quality product made of 16MnCr5.

Suitable for :

Heavy-duty chucks from Schunk, Röhm and other heavy-duty chuck manufacturers.

Optional extras:

T-nuts No. 313505 – 313605.

Note:

- **When fitting to a chuck, please check serrations, slot width (D), and hole spacing (a, b).**
- **Aluminium top jaws on request.**

Length L: 75 mm

Width B: 36 mm

Height H: 53 mm

Hole centre spacing a: 12 mm

Bore spacing b: 19 mm

Slot width D: 17 mm

Technical description

for chuck type	200 mm
Slot width D	17 mm
Height H	53 mm

Width B	36 mm
Bore spacing b	19 mm
Length L	75 mm
for thread DIN 912	M12
Hole centre spacing a	12 mm
Type of product	Heavy-duty lathe chuck jaws