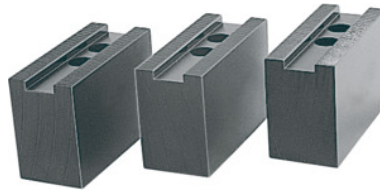




Top jaws set, 3 pieces, for chuck type: 250



Order data

Order number	313430 250
GTIN	4019208193427
Item class	32R

Description

Version:

Precision-milled slots and serrations, **not burnished.**

Material:

Quality product made of 16MnCr5.

Suitable for :

Heavy-duty chucks from Schunk, Röhmm and other heavy-duty chuck manufacturers.

Optional extras:

T-nuts No. 313505 – 313605.

Note:

- **When fitting to a chuck, please check serrations, slot width (D), and hole spacing (a, b).**
- **Aluminium top jaws on request.**

Length L: 95 mm

Width B: 45 mm

Height H: 54 mm

Hole centre spacing a: 15 mm

Bore spacing b: 25 mm

Slot width D: 21 mm

Technical description

Slot width D	21 mm
for thread DIN 912	M16
Bore spacing b	25 mm

Length L	95 mm
Height H	54 mm
Width B	45 mm
also suitable for chuck type	315 mm
Hole centre spacing a	15 mm
for chuck type	250 mm
Type of product	Heavy-duty lathe chuck jaws