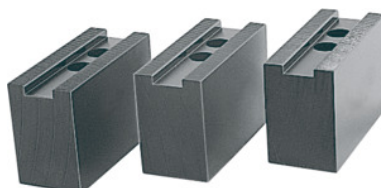




Top jaws set, 3 pieces, for chuck type: 400



Order data

Order number	313430 400
GTIN	4019208193434
Item class	32R

Description

Version:

Precision-milled slots and serrations, **not burnished**.

Material:

Quality product made of 16MnCr5.

Suitable for :

Heavy-duty chucks from Schunk, Röhmm and other heavy-duty chuck manufacturers.

Optional extras:

T-nuts No. 313505 – 313605.

Note:

- **When fitting to a chuck, please check serrations, slot width (D), and hole spacing (a, b).**
- **Aluminium top jaws on request.**

With fine serrations $3/32 \times 90^\circ$.

Length L: 130 mm

Width B: 50 mm

Height H: 80 mm

Hole centre spacing a: 20 mm

Bore spacing b: 31 mm

Slot width D: 25.5 mm

Technical description

Width B	50 mm
Length L	130 mm

for thread DIN 912	M20
also suitable for chuck type	500 / 630 mm
Hole centre spacing a	20 mm
Slot width D	25.5 mm
Height H	80 mm
for chuck type	400 mm
Bore spacing b	31 mm
Type of product	Heavy-duty lathe chuck jaws