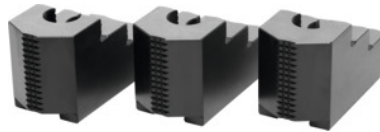




## Stepped top jaws set, 3 pieces, for chuck type: 165



### Order data

|              |               |
|--------------|---------------|
| Order number | 313470 165    |
| GTIN         | 2050001929624 |
| Item class   | 33T           |

### Description

#### Version:

**Precision milled** slots and **precision ground** serrations, **burnished**.

Hardened.

#### Application:

For external and internal clamping.

#### Material:

Quality product made of 16MnCr5.

#### Suitable for :

**Heavy-duty chucks** from Schunk, Röhms and other heavy-duty chuck manufacturers.

#### Optional extras:

T-nuts No. 313505 – 313605.

#### Note:

**Hard top and stepped jaws purchased subsequently must be ground internally in the chuck for concentricity and runout.**

- **When fitting to a chuck, please check serrations, slot width (D), and hole spacing (a, b).**
- **Aluminium top jaws on request.**

Length L: 72.5 mm

Width B: 40 mm

Height H: 49 mm

Hole centre spacing a: 18 mm

Bore spacing b: 19 mm

Slot width D: 17 mm

### Technical description

|                       |                             |
|-----------------------|-----------------------------|
| for chuck type        | 165 mm                      |
| Hole centre spacing a | 18 mm                       |
| Height H              | 49 mm                       |
| Slot width D          | 17 mm                       |
| Width B               | 40 mm                       |
| Length L              | 72.5 mm                     |
| Bore spacing b        | 19 mm                       |
| Type of product       | Heavy-duty lathe chuck jaws |